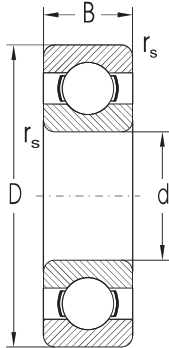
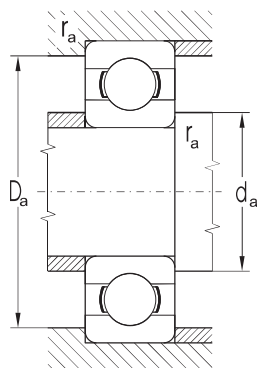


Jednořadá kuličková ložiska d = 20 až 50 mm



Rozměry				Základní únosnost		Mezní únavové zatížení P_u	Mezní frekvence otáčení pro mazání		Označení ložiska
d	D	B	$r_{s \min}$	dynamická C_r	statická C_{or}		plastickým mazivem	olejem	
mm				kN		kN	min ⁻¹		
20	42	8,0	0,30	9,371	4,972	0,226	17000	20000	16004D
	42	12,0	0,60	9,371	4,972	0,226	17000	20000	6004
	47	14,0	1,00	12,774	6,553	0,298	15000	18000	6204
	47	18,0	1,00	12,774	6,553	0,298	15000	18000	62204
	47	20,6	1,00	12,774	6,553	0,298	15000	18000	63204
	52	15,0	1,10	15,866	7,811	0,355	14000	17000	6304
25	52	21,0	1,10	15,866	7,811	0,355	14000	17000	62304
	47	8,0	0,30	6,950	4,550	0,207	14000	17000	16005
	47	8,0	0,30	10,070	5,806	0,264	14000	17000	16005D
	47	12,0	0,60	10,070	5,806	0,264	14000	17000	6005
	52	15,0	1,00	14,029	7,940	0,361	12000	15000	6205
	52	18,0	1,00	14,029	7,940	0,361	12600	15000	62205
	62	17,0	1,10	21,123	10,806	0,491	11000	13000	6305
	62	24,0	1,10	21,123	10,806	0,491	11000	13000	62305
30	80	21,0	1,50	36,000	19,200	0,873	9400	11000	6405
	55	9,0	0,30	11,200	7,360	0,335	12000	14000	16006
	55	13,0	1,00	13,243	8,250	0,375	12000	14000	6006
	62	16,0	1,00	19,443	11,186	0,508	11000	13000	6206
	62	20,0	1,00	19,443	11,186	0,508	11000	13000	62206
	72	19,0	1,10	29,701	15,678	0,713	10000	12000	6306
35	90	23,0	1,50	43,000	23,700	1,077	8400	10000	6406
	62	9,0	0,30	9,960	7,362	0,335	10600	12600	16007
	62	14,0	1,00	15,956	10,328	0,469	10600	12600	6007
	72	17,0	1,10	25,663	15,227	0,692	9400	11000	6207
	80	21,0	1,50	33,367	19,230	0,874	8400	10000	6307
40	100	25,0	1,50	55,200	31,000	1,409	7500	8900	6407
	68	9,0	0,30	12,667	9,617	0,437	9400	11000	16008
	68	15,0	1,00	16,824	11,493	0,522	9400	11000	6008
	80	18,0	1,10	32,633	19,887	0,904	8400	10000	6208
	90	23,0	1,50	40,760	24,170	1,099	7900	9400	6308
	110	27,0	2,00	63,100	36,200	1,645	6700	7900	6408
45	75	10,0	0,60	15,659	12,172	0,553	8400	10000	16009
	75	16,0	1,00	21,100	15,300	0,695	8400	10000	6009
	85	19,0	1,10	32,678	20,325	0,924	7900	9400	6209
	100	25,0	1,50	52,804	31,715	1,442	7100	8400	6309
	120	29,0	2,00	76,500	44,700	2,032	6000	7100	6409
	50	80	10,0	0,60	16,092	13,147	0,598	7900	9400
80		16,0	1,00	21,720	16,650	0,757	7900	9400	6010
90		20,0	1,10	35,066	23,226	1,056	7100	8400	6210
110		27,0	2,00	61,754	37,754	1,716	6300	7500	6310
130		31,0	2,10	87,400	52,100	2,368	5600	6700	6410



Připojovací rozměry				Hmotnost
d	d _a min	D _a max	r _a max	~
mm				kg
20	22,0	40,0	0,3	0,0500
	24,0	38,0	0,6	0,0700
	25,0	42,0	1,0	0,1080
	25,0	42,0	1,0	0,1300
	25,0	42,0	1,0	0,1460
	26,0	45,0	1,0	0,1450
	26,0	45,0	1,0	0,2000
25	27,0	43,0	0,3	0,0530
	27,0	43,0	0,3	0,0530
	28,0	43,0	0,6	0,0820
	30,0	47,0	1,0	0,1290
	30,0	47,0	1,0	0,1500
	31,0	55,0	1,0	0,2300
	31,0	55,0	1,0	0,3200
34,0	70,0	1,5	0,5300	
30	32,0	53,0	0,3	0,0870
	34,0	50,0	1,0	0,1190
	35,0	57,0	1,0	0,2000
	35,0	57,0	1,0	0,2400
	36,0	65,0	1,0	0,3310
	39,0	80,0	1,5	0,7250
35	37,0	60,0	0,3	0,1110
	39,5	57,0	1,0	0,1540
	42,0	65,0	1,0	0,2840
	42,0	71,0	1,5	0,4470
	44,0	90,0	1,5	0,9540
40	42,0	62,0	0,3	0,1250
	44,0	63,0	1,0	0,1910
	47,0	73,0	1,0	0,3490
	47,0	81,0	1,5	0,6250
	50,0	97,0	2,0	1,1230
45	49,0	71,0	1,0	0,1700
	49,0	70,0	1,0	0,2410
	52,0	78,0	1,0	0,4040
	52,0	91,0	1,5	0,8280
	55,0	107,0	2,0	1,5400
50	54,0	76,0	0,6	0,1880
	54,0	75,0	1,0	0,2600
	57,0	83,0	1,0	0,4600
	60,0	100,0	2,0	1,0600
	63,0	116,0	2,0	1,8900