

OVAL FLANGE BALL BEARING UNITS

**UCFL2**

(NORMAL DUTY)



SL TYPE SEAL

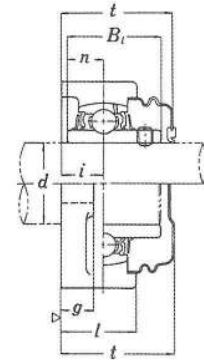
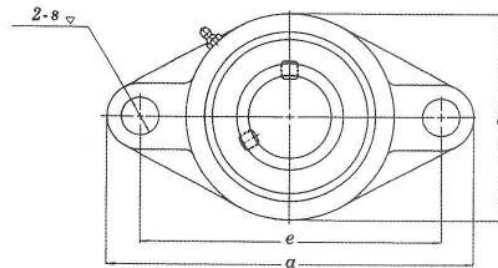
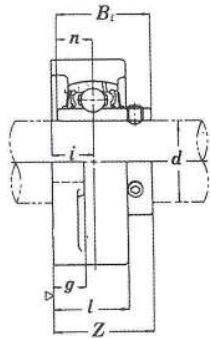


L3 TYPE SEAL

DOUBLE PROTECTION METHOD (STAMPED STEEL COVER)

UCFL2-C... WITH OPEN COVER

UCFL2-D... WITH CLOSED COVER



Unit No.	Shaft		Dimensions (in./mm)											Bolt Used		Bearing No.	Housing No.	Weight (kgf)		
	d		a	e	i	g	l	s	b	Z	t	Bi	n	(mm)	(in.)					
	(in.)	(mm)																		
UCFL 201 201-8 202 202-10 203 204-12 204	1/2 5/8 3/4	12 15 17 20																UC 201 201-8 202 202-10 203 204-12 204	FL 204	0.50 0.48 0.47 0.45
UCFL 205-14 205-15 205 205-16	7/8 15/16 1	25	51/8 130	357/64 99	5/8 16	1/2 13	1 1/16 27	5/8 16	2 11/16 68	1 13/32 35.7	19/16 40	1.3425 34.1	0.5630 14.3	14	1/2	UC 205-14 205-15 205 205-16	FL 205	0.64		
UCFL 206-18 206 206-19	1 1/8 1 3/16	30	5 13/16 148	4 39/64 117	45/64 18	1/2 13	1 7/32 31	5/8 16	3 5/32 80	1 19/32 40.2	1 23/32 44.0	1.5000 38.1	0.6260 15.9	14	1/2	UC 206-18 206 206-19	FL 206	0.93		
UCFL 207-20 207-21 207-22 207 207-23	1 1/4 1 5/16 1 3/8 1 7/16	35	6 11/32 161	5 1/8 130	3/4 19	9/16 14	1 11/32 34	5/8 16	3 17/32 90	1 3/4 44.4	1 15/16 49	1.6890 42.9	0.6890 17.5	14	1/2	UC 207-20 207-21 207-22 207 207-23	FL 207	1.2		
UCFL 208-24 208-25 208	1 1/2 1 9/16	40	6 7/8 175	5 43/64 144	53/64 21	9/16 14	1 13/32 36	5/8 16	3 15/16 100	2 1/32 51.2	2 5/32 55.0	1.9370 49.2	0.7480 19.0	14	1/2	UC 208-24 208-25 208	FL 208	1.6		
UCFL 209-26 209-27 209-28 209	1 5/8 1 11/16 1 3/4	45	7 13/32 188	5 53/64 148	55/64 22	19/32 15	1 1/2 38	3/4 19	4 1/4 108	2 1/16 52.2	2 7/32 56.0	1.9370 49.2	0.7480 19.0	16	5/8	UC 209-26 209-27 209-28 209	FL 209	1.9		
UCFL 210-30 210-31 210 210-32	1 7/8 1 15/16 2	50	7 3/4 197	6 3/16 157	55/64 22	19/32 15	1 9/16 40	3/4 19	4 17/32 115	2 5/32 54.6	2 5/16 59	2.0315 51.6	0.7480 19.0	16	5/8	UC 210-30 210-31 210 210-32	FL 210	2.2		
UCFL 211-32 211-34 211 211-35	2 2 1/8 2 3/16	55	8 13/16 224	7 1/4 184	63/64 25	23/32 18	1 11/16 43	3/4 19	5 1/8 130	2 5/16 58.4	2 15/32 63	2.1890 55.6	0.8740 22.2	16	5/8	UC 211-32 211-34 211 211-35	FL 211	3.3		
UCFL 212-36 212 212-38 212-39	2 1/4 2 3/16 2 7/16	60	9 27/32 250	7 61/64 202	19/64 29	23/32 18	1 7/8 48	29/32 23	5 1/2 140	5 23/32 68.7	2 7/8 73.0	2.5630 65.1	1.0000 25.4	20	3/4	UC 212-36 212 212-38 212-39	FL 212	4.2		
UCFL 213-40 213	2 1/2	65	10 5/32 258	8 17/64 210	13/16 30	25/32 20	1 31/32 50	1 29/32 23	6 3/32 155	2 3/4 69.7	2 29/32 74	2.5630 65.1	1.0000 25.4	20	3/4	UC 213-40 213	FL 213	5.1		
UCFL 214-44 214	2 3/4	70	10 7/16 265	8 1/2 216	17/32 31	25/32 20	2 1/8 54	29/32 23	6 5/16 160	2 31/32 75.4	3 5/32 80.0	2.9370 74.6	1.1890 30.2	20	3/4	UC 214-44 214	FL 214	5.7		
UCFL 215 215-48	3	75	10 13/16 275	8 55/64 225	1 11/32 31	25/32 20	2 7/32 56	29/32 23	6 1/2 105	3 3/32 83.3	3 9/32 83.0	3.0630 77.8	1.3110 33.3	20	3/4	UC 215 215-48	FL 215	6.4		
UCFL 216		80	11 13/32 290	9 11/64 233	1 11/32 34	25/32 20	2 9/32 58	63/64 25	7 3/32 180	3 9/32 83.3	3 15/32 88.0	3.2520 82.6	1.3110 33.3	22	7/8	UC 216	FL 216	7.8		
UCFL 217-52 217	3 1/4	85	12 305	9 49/64 248	1 27/64 36	7/8 22	2 15/32 63	63/64 25	7 15/32 190	3 7/16 87.6	3 5/8 92.0	3.3740 85.7	1.3425 34.1	22	7/8	UC 217-52 217	FL 217	9.8		
UCFL 218-56 218	3 1/2	90	12 19/32 320	10 7/16 265	1 37/64 40	29/32 23	2 11/16 68	63/64 25	8 1/16 205	3 25/32 96.3	3 31/32 101.0	3.7795 96.0	1.5630 39.7	22	7/8	UC 218-56 218	FL 218	12.3		