

OVAL FLANGE BALL BEARING UNITS

UCFL3

(HEAVY DUTY)



SL TYPE SEAL

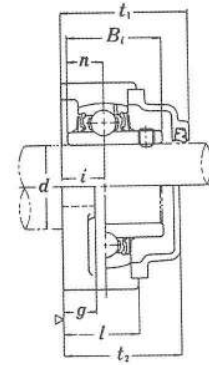
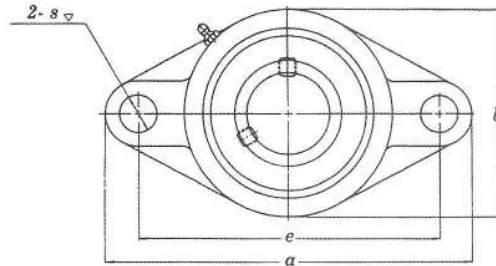
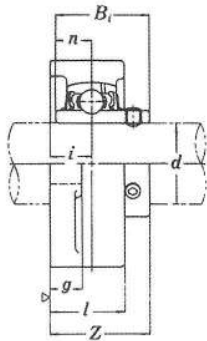


L3 TYPE SEAL

DOUBLE PROTECTION METHOD (CAST-IRON COVER)

UCFL3-GC...WITH OPEN COVER

UCFL3-GD...WITH CLOSED COVER



Unit No.	Shaft Dia.		Dimensions (in.) (mm)													Bolt Used		Bearing No.	Housing No.	Weight (kgf)
	d (in.)	d (mm)	a	e	i	g	l	s	b	Z	t1	t2	Bi	n	(mm)	(in.)				
UCFL 305 305-16	1	25	5 ²⁹ / ₃₂ 150	4 ²⁹ / ₆₄ 113	5/8 16	1/2 13	1 ⁵ / ₃₂ 29	3/4 19	3 ⁵ / ₃₂ 80	1 ¹⁷ / ₃₂ 39	2 ¹ / ₈ 54	1 ¹⁵ / ₁₆ 49	1.4961 38	0.5906 15	16	5/8	UC 305 305-16	FL 305	1.1	
UCFL 306-18 306	1 ¹ / ₈	30	7 ³ / ₃₂ 180	5 ⁹ / ₃₂ 134	4 ⁵ / ₆₄ 18	1 ⁹ / ₃₂ 15	1 ¹ / ₄ 32	2 ⁹ / ₃₂ 23	3 ¹⁷ / ₃₂ 90	1 ²³ / ₃₂ 44	2 ⁵ / ₁₆ 59	2 ¹ / ₈ 54	1.6929 43	0.6693 17	20	3/4	UC 306-18 306	FL 306	1.5	
UCFL 307-20 307-22 307 307-23	1 ¹ / ₄ 1 ³ / ₈ 1 ⁷ / ₁₆	35	7 ⁹ / ₃₂ 185	5 ³⁵ / ₆₄ 141	2 ⁵ / ₃₂ 20	5/8 16	1 ¹³ / ₃₂ 36	2 ⁹ / ₃₂ 23	3 ¹⁵ / ₁₆ 100	1 ¹⁵ / ₁₆ 49	2 ¹⁷ / ₃₂ 64	2 ⁵ / ₁₆ 59	1.8897 48	0.7480 19	20	3/4	UC 307-20 307-22 307 307-23	FL 307	1.8	
UCFL 308-24 308	1 ¹ / ₂	40	7 ⁷ / ₈ 200	6 ⁷ / ₃₂ 158	2 ⁹ / ₃₂ 23	2 ¹ / ₃₂ 17	1 ⁹ / ₁₆ 40	2 ⁹ / ₃₂ 23	4 ¹³ / ₃₂ 112	2 ⁷ / ₃₂ 56	2 ²⁵ / ₃₂ 71	2 ¹⁹ / ₃₂ 66	2.0472 52	0.7480 19	20	3/4	UC 308-24 308	FL 308	2.5	
UCFL 309-28 309	1 ³ / ₄	45	9 ¹ / ₁₆ 230	6 ³¹ / ₃₂ 177	6 ³ / ₆₄ 25	2 ³ / ₃₂ 18	1 ²³ / ₃₂ 44	6 ³ / ₆₄ 25	4 ²⁹ / ₃₂ 125	2 ⁹ / ₈ 60	3 76	2 ³ / ₄ 70	2.2441 57	0.8661 22	22	7/8	UC 309-28 309	FL 309	3.5	
UCFL 310-31 310	1 ¹⁵ / ₁₆	50	9 ⁷ / ₁₆ 240	7 ²³ / ₆₄ 187	1 ⁷ / ₆₄ 28	3/4 19	1 ⁷ / ₈ 48	6 ³ / ₆₄ 25	5 ¹ / ₂ 140	2 ⁵ / ₈ 67	3 ⁹ / ₃₂ 83	3 ¹ / ₃₂ 77	2.4015 61	0.8661 22	22	7/8	UC 310-31 310	FL 310	4.4	
UCFL 311-32 311	2	55	9 ²⁷ / ₃₂ 250	7 ⁶¹ / ₆₄ 198	1 ³ / ₁₆ 30	2 ⁵ / ₃₂ 20	2 ¹ / ₁₆ 52	6 ³ / ₆₄ 25	5 ²⁹ / ₃₂ 150	2 ²⁵ / ₃₂ 71	3 ⁷ / ₁₆ 87	3 ³ / ₁₆ 81	2.5984 66	0.9842 25	22	7/8	UC 311-32 311	FL 311	5.3	
UCFL 312 312		60	10 ⁵ / ₈ 270	8 ¹¹ / ₃₂ 212	1 ¹⁹ / ₆₄ 33	7/8 22	2 ⁷ / ₃₂ 56	1 ⁷ / ₃₂ 31	6 ⁵ / ₁₆ 160	3 ¹ / ₁₆ 78	3 ³ / ₄ 95	3 ¹⁵ / ₃₂ 88	2.7953 71	1.0236 26	27	1	UC 312 312	FL 312	6.5	
UCFL 313-40 313	2 ¹ / ₂	65	1 ¹⁵ / ₈ 295	9 ²⁹ / ₆₄ 240	1 ¹⁹ / ₆₄ 33	1 25	2 ⁹ / ₃₂ 58	1 ⁷ / ₃₂ 31	6 ⁷ / ₈ 175	3 ¹ / ₁₆ 78	3 ¹¹ / ₁₆ 94	3 ¹⁵ / ₃₂ 88	2.9528 75	1.1811 30	27	1	UC 313-40 313	FL 313	8.5	
UCFL 314-44 314	2 ³ / ₄	70	12 ¹³ / ₃₂ 315	9 ²⁷ / ₃₂ 250	1 ²⁷ / ₆₄ 36	1 ³ / ₃₂ 28	2 ¹³ / ₃₂ 61	1 ³ / ₃₂ 35	7 ⁹ / ₃₂ 185	3 ³ / ₁₆ 81	3 ²⁷ / ₃₂ 98	3 ¹⁹ / ₃₂ 91	3.0709 78	1.2992 33	30	1 ¹ / ₈	UC 314-44 314	FL 314	9.7	
UCFL 315 315-48	3	75	12 ¹⁹ / ₃₂ 320	10 ¹⁵ / ₆₄ 260	1 ¹⁷ / ₃₂ 39	1 ⁹ / ₁₆ 30	2 ¹⁹ / ₃₂ 66	1 ³ / ₁₆ 35	7 ¹¹ / ₁₆ 195	3 ¹ / ₂ 89	4 ³ / ₁₆ 106	3 ²⁹ / ₃₂ 99	3.2283 82	1.2598 32	30	1 ¹ / ₈	UC 315 315-48	FL 315	11.3	
UCFL 316 316		80	13 ³¹ / ₃₂ 355	11 ⁷ / ₃₂ 285	1 ¹ / ₂ 38	1 ¹ / ₄ 32	2 ¹¹ / ₁₆ 68	1 ¹ / ₂ 38	8 ⁹ / ₃₂ 210	3 ¹ / ₃₂ 90	4 ⁷ / ₃₂ 107	3 ¹⁵ / ₁₆ 100	3.3858 86	1.3386 34	33	1 ¹ / ₄	UC 316 316	FL 316	14.4	
UCFL 317 317		85	14 ⁹ / ₁₆ 370	11 ¹³ / ₁₆ 300	1 ¹⁴⁷ / ₆₄ 44	1 ¹ / ₄ 32	2 ²⁹ / ₃₂ 74	1 ¹ / ₂ 38	8 ²¹ / ₃₂ 220	3 ¹⁵ / ₁₆ 100	4 ¹⁹ / ₃₂ 117	4 ¹¹ / ₃₂ 110	3.7795 96	1.5748 40	33	1 ¹ / ₄	UC 317 317	FL 317	16.0	
UCFL 318-56 318	3 ¹ / ₂	90	15 ⁵ / ₃₂ 385	12 ¹⁹ / ₃₂ 315	1 ¹⁴⁷ / ₆₄ 44	1 ¹³ / ₃₂ 36	3 76	1 ¹ / ₂ 38	9 ¹ / ₄ 235	3 ¹⁵ / ₁₆ 100	4 ¹¹ / ₁₆ 119	4 ⁹ / ₈ 111	3.7795 96	1.5748 40	33	1 ¹ / ₄	UC 318-56 318	FL 318	19.0	
UCFL 319 319		95	15 ¹⁵ / ₁₆ 405	13 330	2 ²¹ / ₆₄ 59	1 ⁹ / ₁₆ 40	3 ¹¹ / ₁₆ 94	1 ³⁹ / ₆₄ 41	9 ²⁷ / ₃₂ 250	4 ⁹ / ₄ 121	5 ¹ / ₂ 140	5 ³ / ₁₆ 132	4.0551 103	1.6142 41	36	1 ³ / ₈	UC 319 319	FL 319	24.6	
UCFL 320 320-64	4	100	17 ⁵ / ₁₆ 440	14 ¹ / ₆₄ 360	2 ²¹ / ₆₄ 59	1 ⁹ / ₁₆ 40	3 ¹¹ / ₁₆ 94	1 ⁴⁷ / ₆₄ 44	10 ⁹ / ₈ 270	4 ²⁹ / ₃₂ 125	5 ³ / ₄ 146	5 ¹¹ / ₃₂ 136	4.2519 108	1.6535 42	39	1 ¹ / ₂	UC 320 320-64	FL 320	29.4	
UCFL 321 321		105	14 ⁹ / ₃₂ 440	14 ³ / ₃₂ 360	2 ⁵ / ₁₆ 59	1 ⁹ / ₁₆ 40	3 ¹¹ / ₁₆ 94	1 ⁴⁷ / ₆₄ 44	10 ⁹ / ₈ 270	5 127	5 ²⁹ / ₃₂ 150	5 ¹⁵ / ₃₂ 139	4.4094 112	1.7322 44	39	1 ¹ / ₂	UC 321 321	FL 321	30.2	
UCFL 322 322		110	18 ¹ / ₂ 470	15 ²³ / ₆₄ 390	2 ²³ / ₆₄ 60	1 ²¹ / ₃₂ 42	3 ²⁵ / ₃₂ 96	1 ⁴⁷ / ₆₄ 44	11 ¹⁹ / ₁₆ 300	5 ⁵ / ₃₂ 131	6 ¹ / ₁₆ 154	5 ¹⁹ / ₃₂ 142	4.6063 117	1.8110 46	39	1 ¹ / ₂	UC 322 322	FL 322	36.2	
UCFL 324 324		120	20 ¹⁵ / ₃₂ 520	16 ⁵⁹ / ₆₄ 430	2 ⁹ / ₁₆ 65	1 ⁷ / ₈ 48	4 ¹¹ / ₃₂ 110	1 ²⁷ / ₃₂ 47	13 330	5 ¹ / ₂ 140	6 ⁷ / ₁₆ 163	5 ¹⁵ / ₁₆ 151	4.9606 126	2.0079 51	42	1 ⁵ / ₈	UC 324 324	FL 324	51.6	
UCFL 326 326		130	21 ²¹ / ₃₂ 550	18 ⁷ / ₆₄ 460	2 ⁹ / ₁₆ 65	1 ³¹ / ₃₂ 50	4 ¹⁷ / ₃₂ 115	1 ²⁷ / ₃₂ 47	14 ⁴ / ₁₆ 360	5 ³ / ₄ 146	6 ²⁵ / ₃₂ 172	6 ⁵ / ₁₆ 160	5.3150 135	2.1260 54	42	1 ⁵ / ₈	UC 326 326	FL 326	61.6	
UCFL 328 328		140	23 ⁵ / ₈ 600	19 ¹¹ / ₁₆ 500	2 ⁵ / ₁₆ 75	2 ³ / ₈ 60	4 ²⁹ / ₃₂ 125	2 51	15 ³ / ₄ 400	6 ¹ / ₃₂ 161	7 ⁵ / ₁₆ 186	6 ¹⁵ / ₁₆ 176	5.7086 145	2.3228 59	45	1 ³ / ₄	UC 328 328	FL 328	68.4	