

TAKE-UP BALL BEARING UNITS

UCT3

(HEAVY DUTY)

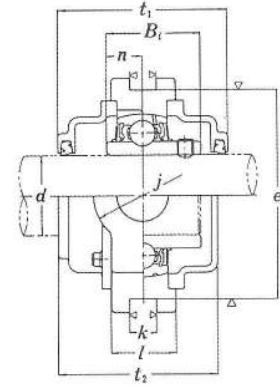
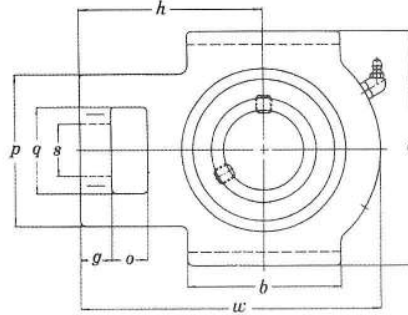
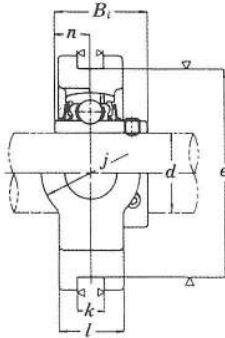


SL TYPE SEAL



L3 TYPE SEAL

DOUBLE PROTECTION METHOD (CAST-IRON COVER)
 UCT3-GC WITH COVER, BOTH SIDES OPEN
 UCT3-GCD WITH COVER, ONE SIDE CLOSED



Unit No.	Shaft Dia.		Dimensions (in.)																	Bearing No.	Housing No.	Weight (kgf)
	d		(mm)																			
	(in.)	(mm)	o	g	p	q	s	b	K	e	a	w	j	l	h	t ₁	t ₂	B ₁	n			
UCT 305 305-16	1	25	5/16	15/32	27/16	113/32	11/32	29/16	15/32	33/32	31/2	413/16	113/32	11/32	3	3	225/32	1.4961	0.5906	UC 305 305-16	T 305	1.4
UCT 306-18 306	1 1/8	30	23/32	9/16	27/4	15/8	17/64	229/32	5/8	325/64	315/16	513/32	15/8	19/32	311/32	37/32	82	1.6929	0.6693	UC 306-18 306	T 306	1.8
UCT 307-20 307-22 307 307-23	1 1/4 1 3/8	35	25/32	19/32	215/16	125/32	13/16	35/32	5/8	315/16	43/8	529/32	125/32	11/4	311/16	315/32	83	1.8897	0.7480	UC 307-20 307-22 307 307-23	T 307	2.3
UCT 308-24 308	1 1/2	40	7/8	21/32	39/32	131/32	117/64	31/2	45/16	413/32	47/8	63/8	131/32	11/32	315/16	325/32	91	2.0472	0.7480	UC 308-24 308	T 308	3.0
UCT 309-28 309	1 3/4	45	15/16	23/32	317/32	25/32	111/32	313/16	45/64	429/64	57/16	7	25/32	11/2	411/32	41/32	325/32	2.2441	0.8661	UC 309-28 309	T 309	4.1
UCT 310-31 310	1 5/8	50	11/16	25/32	327/32	213/32	129/64	43/16	25/32	523/64	515/16	717/32	213/32	19/16	419/32	411/32	43/32	2.4015	0.8661	UC 310-31 310	T 310	4.9
UCT 311-32 311	2	55	13/32	13/16	47/8	219/32	117/32	417/32	35/64	529/32	613/32	85/32	219/32	123/32	5	41/2	41/4	2.5984	0.9842	UC 311-32 311	T 311	6.1
UCT 312	60	171/32	29/32	47/16	225/32	139/64	427/32	55/64	619/64	160	7	821/32	225/32	113/16	45	47/8	419/32	2.7953	1.0236	UC 312	T 312	7.6
UCT 313-40 313	2 1/2	65	11/4	23	49/16	3/4	111/16	57/32	11/32	611/16	715/32	238	35/32	131/32	53/4	413/16	47/16	2.9528	1.1811	UC 313-40 313	T 313	9.3
UCT 314-44 314	2 3/4	70	113/32	36	25	51/8	315/32	113/16	51/2	11/32	73/32	215	929/32	317/32	52	63/32	419/32	3.0709	1.2992	UC 314-44 314	T 314	11.1
UCT 315 315-48	3	75	113/32	36	25	53/16	311/32	113/16	529/32	11/32	79/16	81/2	105/16	317/32	29/32	65/16	59/32	3.2283	1.2598	UC 315 315-48	T 315	13
UCT 316	80	121/32	12/32	28	529/32	327/32	23/32	611/16	117/64	827/64	97/16	1129/32	41/32	217/32	77/32	53/4	515/32	3.7795	1.5748	UC 316	T 316	16.2
UCT 317	85	121/32	12/32	30	531/32	327/32	23/32	611/16	117/64	827/64	97/16	1129/32	41/32	217/32	77/32	53/4	515/32	3.7795	1.5748	UC 317	T 317	19
UCT 318-56 318	3 1/2	90	113/16	46	30	59/16	43/16	21/4	67/8	117/64	821/32	101/32	129/32	411/32	219/32	79/16	529/32	3.7795	1.5748	UC 318-56 318	T 318	21.6
UCT 319	95	113/16	46	31	61/2	43/16	21/4	73/32	13/8	929/64	105/8	121/16	411/32	227/32	73/4	63/8	61/16	4.0551	1.6142	UC 319	T 319	24.9
UCT 320 320-64	4	100	17/8	48	32	67/8	115	417/32	221/64	77/8	135/64	290	1519/32	423/32	215/16	87/32	627/32	4.2519	1.6535	UC 320 320-64	T 320	30.7
UCT 321	105	17/8	48	32	67/8	115	417/32	221/64	77/8	135/64	290	1519/32	423/32	215/16	87/32	627/32	4.2519	1.6535	UC 321	T 321	36.7	
UCT 322	110	21/16	52	38	95	125	65	215	38	285	320	385	130	80	235	188	176	4.6063	1.8110	UC 322	T 322	39.7
UCT 324	120	27/8	60	42	210	140	70	230	45	320	355	432	140	90	267	196	184	4.9606	2.0079	UC 324	T 324	54.4
UCT 326	130	29/16	65	45	220	150	75	240	50	350	385	465	150	100	285	214	202	5.3150	2.1260	UC 326	T 326	69.3
UCT 328	140	29/4	70	50	230	160	80	255	50	380	415	515	155	100	315	222	212	5.7086	2.3228	UC 328	T 328	85.1