

PRESSED STEEL FLANGE BALL BEARING UNITS

SAPF2 SBPF2

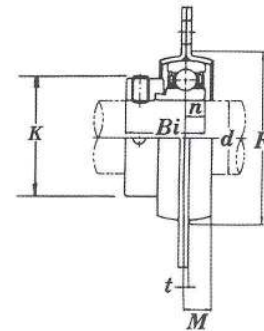
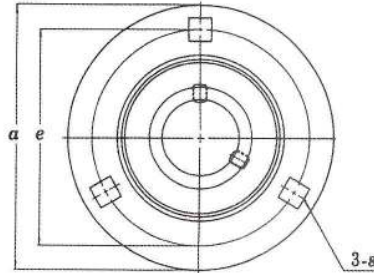
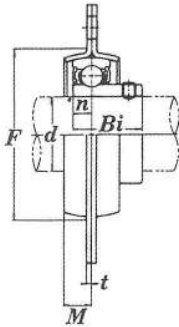
(NORMAL DUTY)



L TYPE SEAL

SBPF2 (SET SCREW LOCKING)

SAPF2 (WITH ECCENTRIC LOCKING COLLAR)



Unit No.	Shaft Dia.		Dimensions (in./mm)							Bolt Used (in.)	SAPF				SBPF			Housing No.
	d (in.)	d (mm)	a	e	M	t	s	n	F (min)		Bi	K	Bearing No.	Weight (kgf)	Bi	Bearing No.	Weight (kgf)	
SAPF SBPF 201-8	1/2	12																
202		15	3 ³ / ₁₆	2 ¹ / ₂	9 ⁹ / ₃₂		9 ⁹ / ₃₂	0.2362	1.9291	1/4	1.1260	1.1260	SA 201-8		SB 201-8			
202-10	5/8	17	81	63.5	7.0	2	7.1	6.0	49		28.6	28.6	202	0.30	202	0.27	PF 203	
203		17											202-10		202-10			
SAPF SBPF 204-12	3/4	20	3 ¹⁹ / ₃₂	2 ³ / ₁₆	5 ⁵ / ₁₆		1 ¹¹ / ₃₂	0.2756	2.1654	5/16	1.2204	1.2598	SA 204-12		SB 204-12			
204		20	91	71.5	8	2	8.7	7.0	55		31	32	204	0.33	204	0.33	PF 204	
SAPF SBPF 205-14	7/8	25	3 ²⁵ / ₃₂	2 ⁶³ / ₆₄	2 ³ / ₆₄		1 ¹¹ / ₃₂	0.2953	2.3622	5/16	1.2204	1.5000	SA 205-14		SB 205-14			
205		25	96	76	9	2	8.7	7.5	60		31	38.1	205	0.42	205	0.38	PF 205	
205-16	1												205-16		205-16			
SAPF SBPF 206-18	1 1/8	30	4 ⁷ / ₁₆	3 ⁹ / ₁₆	2 ⁵ / ₆₄		1 ¹³ / ₃₂	0.3150	2.7953	3/8	1.4055	1.7480	SA 206-18		SB 206-18			
206		30	113	90.5	10	2.6	10.5	8.0	71		35.7	44.4	206	0.65	206	0.62	PF 206	
SAPF 206-19	1 3/16												206-19		206-19			
206-20	1 1/4												206-20		206-20			
SAPF SBPF 207-20	1 1/4	35	4 ²⁷ / ₃₂	3 ¹⁵ / ₁₆	1 ³ / ₃₂		1 ¹³ / ₃₂	0.3346	3.190	3/8	1.5315	2.1890	SA 207-20		SB 207-20			
207-22		35	123	100	10.5	2.6	10.5	8.5	81		38.9	55.6	207-22	0.90	207-22	0.82	PF 207	
207	1 7/16												207		207			
207-23													207-23		207-23			