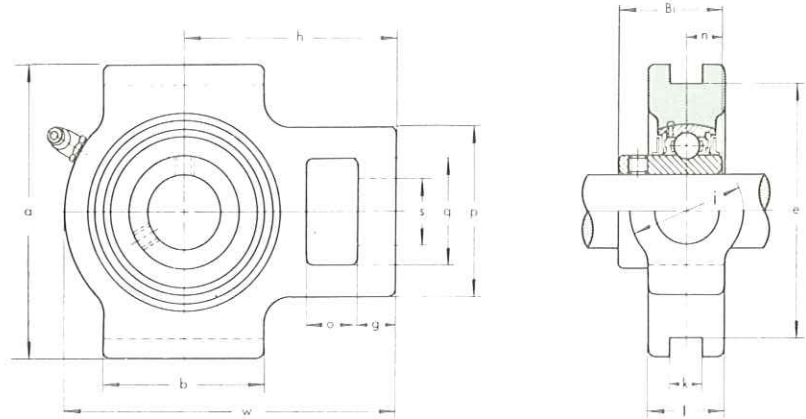


## TAKE-UP UNITS

### UCT X00 type

Medium Duty  
Set-screw Locking

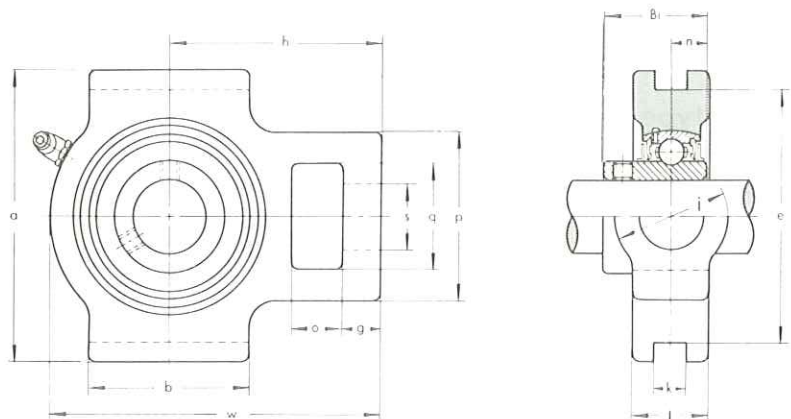


| Unit No. | Shaft Diam. mm | Dimensions mm |    |     |    |    |     |    |     |     |     |    |    |     |      |      | Bearing No. | Housing No. | Weight kg |
|----------|----------------|---------------|----|-----|----|----|-----|----|-----|-----|-----|----|----|-----|------|------|-------------|-------------|-----------|
|          |                | o             | g  | p   | q  | s  | b   | k  | e   | a   | w   | j  | l  | h   | Bi   | n    |             |             |           |
| UCT X05  | 25             | 16            | 10 | 56  | 37 | 22 | 57  | 12 | 89  | 102 | 113 | 37 | 28 | 70  | 38.1 | 15.9 | UC X05      | T X05       | 1.3       |
| UCT X06  | 30             | 16            | 13 | 64  | 37 | 22 | 64  | 12 | 89  | 102 | 129 | 37 | 30 | 78  | 42.9 | 17.5 | UC X06      | T X06       | 1.6       |
| UCT X07  | 35             | 19            | 15 | 83  | 49 | 29 | 83  | 16 | 102 | 114 | 144 | 49 | 36 | 88  | 49.2 | 19   | UC X07      | T X07       | 2.6       |
| UCT X08  | 40             | 19            | 15 | 83  | 49 | 29 | 83  | 16 | 102 | 117 | 144 | 49 | 36 | 87  | 49.2 | 19   | UC X08      | T X08       | 2.6       |
| UCT X09  | 45             | 19            | 16 | 83  | 49 | 29 | 86  | 16 | 102 | 117 | 149 | 49 | 38 | 90  | 51.6 | 19   | UC X09      | T X09       | 2.8       |
| UCT X10  | 50             | 25            | 19 | 102 | 64 | 35 | 95  | 22 | 130 | 146 | 171 | 64 | 42 | 106 | 55.6 | 22.2 | UC X10      | T X10       | 4.4       |
| UCT X11  | 55             | 32            | 19 | 102 | 64 | 35 | 102 | 22 | 130 | 146 | 194 | 64 | 44 | 119 | 65.1 | 25.4 | UC X11      | T X11       | 5.2       |
| UCT X12  | 60             | 32            | 21 | 111 | 70 | 41 | 121 | 26 | 151 | 167 | 224 | 70 | 48 | 137 | 65.1 | 25.4 | UC X12      | T X12       | 7.2       |
| UCT X13  | 65             | 32            | 21 | 111 | 70 | 41 | 121 | 26 | 151 | 167 | 224 | 70 | 48 | 137 | 74.6 | 30.2 | UC X13      | T X13       | 7.4       |
| UCT X14  | 70             | 32            | 21 | 111 | 70 | 41 | 121 | 26 | 151 | 167 | 232 | 70 | 48 | 140 | 77.8 | 33.3 | UC X14      | T X14       | 7.7       |
| UCT X15  | 75             | 32            | 21 | 111 | 70 | 41 | 121 | 28 | 165 | 184 | 235 | 70 | 48 | 140 | 82.6 | 33.3 | UC X15      | T X15       | 8.4       |
| UCT X16  | 80             | 38            | 28 | 124 | 73 | 48 | 157 | 28 | 173 | 198 | 260 | 73 | 54 | 162 | 85.7 | 34.1 | UC X16      | T X16       | 11.3      |
| UCT X17  | 85             | 38            | 28 | 124 | 73 | 48 | 157 | 28 | 173 | 198 | 260 | 73 | 54 | 162 | 96   | 39.7 | UC X17      | T X17       | 11.0      |

## TAKE-UP UNITS

### UCT 300 type

Heavy Duty  
Set-screw Locking



| Unit No. | Shaft Diam. mm | Dimensions mm |    |     |     |    |     |    |     |     |     |     |     |     |     |    | Bearing No. | Housing No. | Weight kg |
|----------|----------------|---------------|----|-----|-----|----|-----|----|-----|-----|-----|-----|-----|-----|-----|----|-------------|-------------|-----------|
|          |                | o             | g  | p   | q   | s  | b   | k  | e   | a   | w   | j   | l   | h   | Bi  | n  |             |             |           |
| UCT 305  | 25             | 16            | 12 | 62  | 36  | 26 | 65  | 12 | 80  | 89  | 122 | 36  | 26  | 76  | 38  | 15 | UC 305      | T 305       | 1.4       |
| UCT 306  | 30             | 18            | 14 | 70  | 41  | 28 | 74  | 16 | 90  | 100 | 137 | 41  | 28  | 85  | 43  | 17 | UC 306      | T 306       | 1.8       |
| UCT 307  | 35             | 20            | 15 | 75  | 45  | 30 | 80  | 16 | 100 | 111 | 150 | 45  | 32  | 94  | 48  | 19 | UC 307      | T 307       | 2.4       |
| UCT 308  | 40             | 22            | 17 | 83  | 50  | 32 | 89  | 18 | 112 | 124 | 162 | 50  | 34  | 100 | 52  | 19 | UC 308      | T 308       | 3.0       |
| UCT 309  | 45             | 24            | 18 | 90  | 55  | 34 | 97  | 18 | 125 | 138 | 178 | 55  | 38  | 110 | 57  | 22 | UC 309      | T 309       | 4.1       |
| UCT 310  | 50             | 27            | 20 | 98  | 61  | 37 | 106 | 20 | 140 | 151 | 191 | 61  | 40  | 117 | 61  | 22 | UC 310      | T 310       | 5.2       |
| UCT 311  | 55             | 29            | 21 | 105 | 66  | 39 | 115 | 22 | 150 | 163 | 207 | 66  | 44  | 127 | 66  | 25 | UC 311      | T 311       | 6.4       |
| UCT 312  | 60             | 31            | 23 | 113 | 71  | 41 | 123 | 22 | 160 | 178 | 220 | 71  | 46  | 135 | 71  | 26 | UC 312      | T 312       | 7.6       |
| UCT 313  | 65             | 32            | 25 | 116 | 70  | 43 | 134 | 26 | 170 | 190 | 238 | 80  | 50  | 146 | 75  | 30 | UC 313      | T 313       | 9.2       |
| UCT 314  | 70             | 36            | 25 | 130 | 85  | 46 | 140 | 26 | 180 | 202 | 252 | 90  | 52  | 155 | 78  | 33 | UC 314      | T 314       | 11.2      |
| UCT 315  | 75             | 36            | 25 | 132 | 85  | 46 | 150 | 26 | 192 | 216 | 262 | 90  | 55  | 160 | 82  | 32 | UC 315      | T 315       | 13.0      |
| UCT 316  | 80             | 42            | 28 | 150 | 98  | 53 | 160 | 30 | 204 | 230 | 282 | 102 | 60  | 174 | 86  | 34 | UC 316      | T 316       | 15.6      |
| UCT 317  | 85             | 42            | 30 | 152 | 98  | 53 | 170 | 32 | 214 | 240 | 298 | 102 | 64  | 183 | 96  | 40 | UC 317      | T 317       | 19.3      |
| UCT 318  | 90             | 46            | 30 | 160 | 106 | 57 | 175 | 32 | 228 | 255 | 312 | 110 | 66  | 192 | 96  | 40 | UC 318      | T 318       | 21.2      |
| UCT 319  | 95             | 46            | 31 | 165 | 106 | 57 | 180 | 35 | 240 | 270 | 322 | 110 | 72  | 197 | 103 | 41 | UC 319      | T 319       | 24.4      |
| UCT 320  | 100            | 48            | 32 | 175 | 115 | 59 | 200 | 35 | 260 | 290 | 345 | 120 | 75  | 210 | 108 | 42 | UC 320      | T 320       | 30.6      |
| UCT 321  | 105            | 48            | 32 | 175 | 115 | 59 | 200 | 35 | 260 | 290 | 345 | 120 | 75  | 210 | 112 | 44 | UC 321      | T 321       | 30.2      |
| UCT 322  | 110            | 52            | 38 | 185 | 125 | 65 | 215 | 38 | 285 | 320 | 385 | 130 | 80  | 235 | 117 | 46 | UC 322      | T 322       | 38.8      |
| UCT 324  | 120            | 60            | 42 | 210 | 140 | 70 | 230 | 45 | 320 | 355 | 432 | 140 | 90  | 267 | 126 | 51 | UC 324      | T 324       | 54.6      |
| UCT 326  | 130            | 65            | 45 | 220 | 150 | 75 | 240 | 50 | 350 | 385 | 465 | 150 | 100 | 285 | 135 | 54 | UC 326      | T 326       | 68.4      |
| UCT 328  | 140            | 70            | 50 | 230 | 160 | 80 | 255 | 50 | 380 | 415 | 515 | 155 | 100 | 315 | 145 | 59 | UC 328      | T 328       | 83.2      |