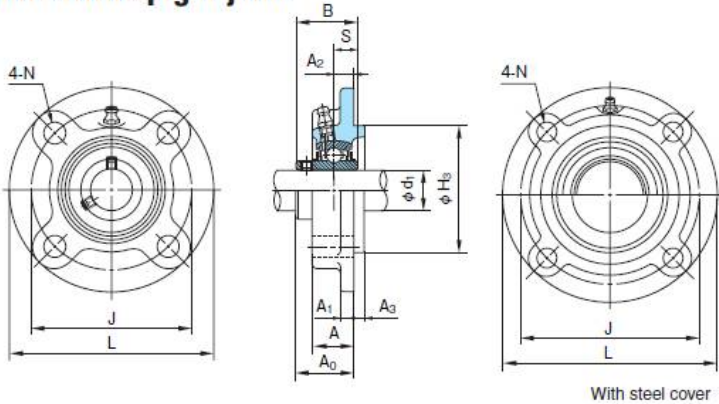
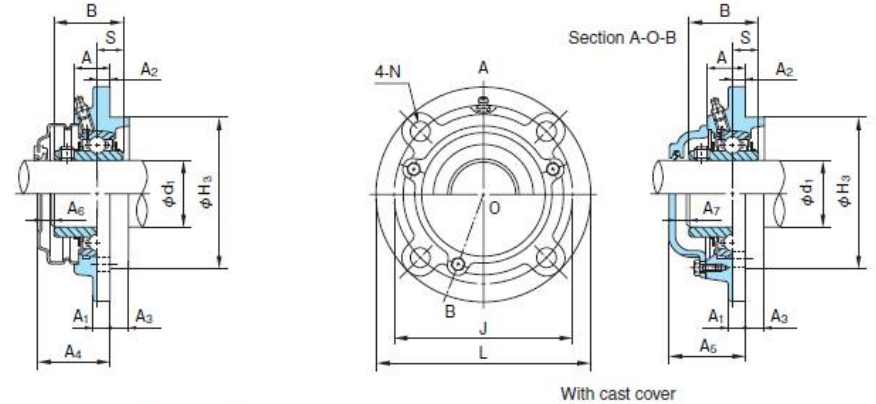


Round Flange Units with spigot joint

UCFC type
With set screws
Cylindrical bore
Shaft dia.: 12~70mm



With steel cover



With cast cover

1N=0.102kgf

Shaft dia. d ₁ (mm)	Unit No.	Boundary dimensions (mm)																Bolt size	Bearings			Housing No.	Unit No. with steel cover		Unit No. with cast cover		Mass of Unit (kg)		
		L	A	J	N	A ₁	A ₂	A ₃	H ₃	A ₀	B	S	A ₄	A ₅	A ₆	A ₇	No.		Basic load rating (N)		Cover with rubber seal (End cover)		Cover with rubber seal (End cover)	standard	With steel cover	With cast cover			
																			Cr	Cor									
12	UCFC201	100	20.5	78	12	7	10	5	62	28.3	31	12.7	38	41	8	6	M10	UC201	12800	6600	FC204	UCFC201C(E)	CUCFC201C(CE)	0.89	0.92	1.2			
15	UCFC202	100	20.5	78	12	7	10	5	62	28.3	31	12.7	38	41	8	6	M10	UC202	12800	6600	FC204	UCFC202C(E)	CUCFC202C(CE)	0.87	0.90	1.2			
17	UCFC203	100	20.5	78	12	7	10	5	62	28.3	31	12.7	38	41	8	6	M10	UC203	12800	6600	FC204	UCFC203C(E)	CUCFC203C(CE)	0.86	0.89	1.2			
20	UCFC204	100	20.5	78	12	7	10	5	62	28.3	31	12.7	38	41	8	6	M10	UC204	12800	6600	FC204	UCFC204C(E)	CUCFC204C(CE)	0.84	0.87	1.2			
25	UCFC205	115	21	90	12	7	10	6	70	29.7	34	14.3	42	45	11	9	M10	UC205	14000	7900	FC205	UCFC205C(E)	CUCFC205C(CE)	1.1	1.1	1.5			
	UCFCX05	111	24	92	9.5	9.5	10	6	76	32.2	38.1	15.9	43	—	9	—	M 8	UCX05	19600	11300	FCX05	UCFCX05C(E)	—	1.1	1.1	—			
30	UCFC206	125	23	100	12	8	10	8	80	32.2	38.1	15.9	43	47	9	8	M10	UC206	19600	11300	FC206	UCFC206C(E)	CUCFC206C(CE)	1.5	1.5	2.0			
	UCFCX06	127	22.5	105	12	9.5	8	9.5	85	33.4	42.9	17.5	43	—	8	—	M10	UCX06	25900	15400	FCX06	UCFCX06C(E)	—	1.4	1.4	—			
35	UCFC207	135	26	110	14	9	11	8	90	36.4	42.9	17.5	46	51	8	8	M12	UC207	25900	15400	FC207	UCFC207C(E)	CUCFC207C(CE)	1.7	1.8	2.4			
	UCFCX07	133	26	111	12	11	9	11	92	39.2	49.2	19	48	—	7	—	M10	UCX07	29300	17900	FCX07	UCFCX07C(E)	—	1.8	1.8	—			
40	UCFC208	145	26	120	14	9	11	10	100	41.2	49.2	19	52	56	10	8	M12	UC208	29300	17900	FC208	UCFC208C(E)	CUCFC208C(CE)	2.1	2.1	2.8			
	UCFCX08	133	26	111	12	11	9	11	92	39.2	49.2	19	50	—	10	—	M10	UCX08	33000	20500	FCX08	UCFCX08C(E)	—	1.8	1.8	—			
45	UCFC209	160	26	132	16	14	10	12	105	40.2	49.2	19	51	55	10	8	M14	UC209	33000	20500	FC309	UCFC209C(E)	CUCFC209C(CE)	3.0	3.1	3.7			
	UCFCX09	155	25	130	14	11	8	12	108	40.6	51.6	19	52	—	10	—	M12	UCX09	35500	23200	FCX09	UCFCX09C(E)	—	2.5	2.6	—			
50	UCFC210	165	28	138	16	14	10	12	110	42.6	51.6	19	54	59	9	10	M14	UC210	35500	23200	FC210	UCFC210C(E)	CUCFC210C(CE)	3.1	3.3	4.2			
	UCFCX10	162	25	136	14	11	7	16	118	40.4	55.6	22.2	51	—	9	—	M12	UCX10	43000	29400	FCX10	UCFCX10C(E)	—	2.9	3.0	—			
55	UCFC211	185	31	150	19	15	13	12	125	46.4	55.6	22.2	57	63	9	10	M16	UC211	43000	29400	FC211	UCFC211C(E)	CUCFC211C(CE)	3.9	4.0	5.0			
	UCFCX11	180	26	152	16	13	4	22	127	43.7	65.1	25.4	54	—	9	—	M14	UCX11	52500	36100	FCX11	UCFCX11C(E)	—	4.0	4.2	—			
60	UCFC212	195	36	160	19	15	17	12	135	56.7	65.1	25.4	68	74	10	11	M16	UC212	52500	36100	FC212	UCFC212C(E)	CUCFC212C(CE)	4.4	4.6	6.0			
	UCFCX12	194	33	165	16	14	11	20	140	50.7	65.1	25.4	63	—	11	—	M14	UCX12	57500	40000	FCX12	UCFCX12C(E)	—	4.6	4.8	—			
65	UCFC213	205	36	170	19	15	16	14	145	55.7	65.1	25.4	67	75	10	13	M16	UC213	57500	40000	FC213	UCFC213C(E)	CUCFC213C(CE)	5.3	5.5	7.0			
	UCFCX13	194	33	165	16	14	11	20	140	55.4	74.6	30.2	—	—	—	—	M14	UCX13	62000	44000	FCX13	—	—	4.9	—	—			
70	UCFC214	215	40	177	19	18	17	14	150	61.4	74.6	30.2	—	84	—	16	M16	UC214	62000	44000	FC214	—	CUCFC214C(CE)	6.8	—	8.2			
	UCFCX14	222	36	190	19	14	14	20	164	58.5	77.8	33.3	—	—	—	—	M16	UCX14	66000	48200	FCX14	—	—	7.4	—	—			

Remarks: 1. Grease nipple: 1/4-28UNF for bore number 13 and under
PF1/8 for bore number 14 and over

Remarks: 2. Examples of unit numbers with cover:
 With steel cover { Cover with rubber seal :UCFC210C
 End cover :UCFC210E
 With cast cover { Cover with rubber seal :CUCFC210C
 End cover :CUCFC210CE