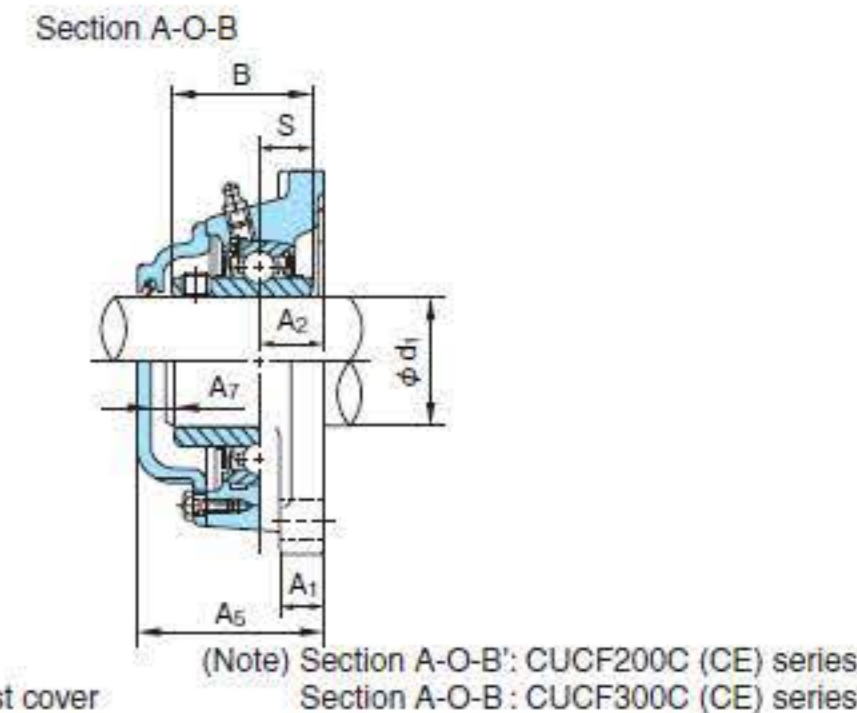
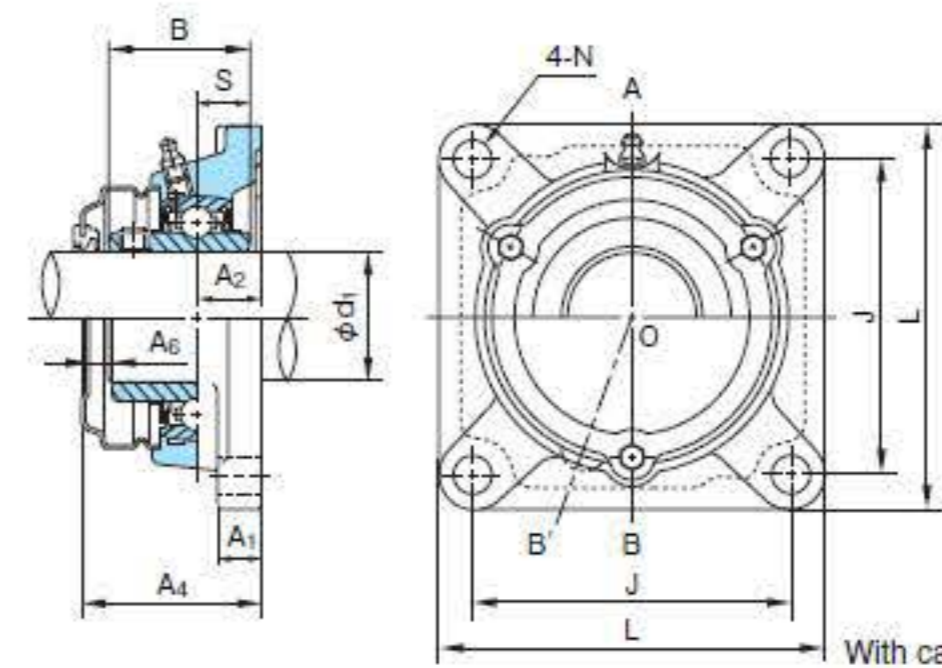
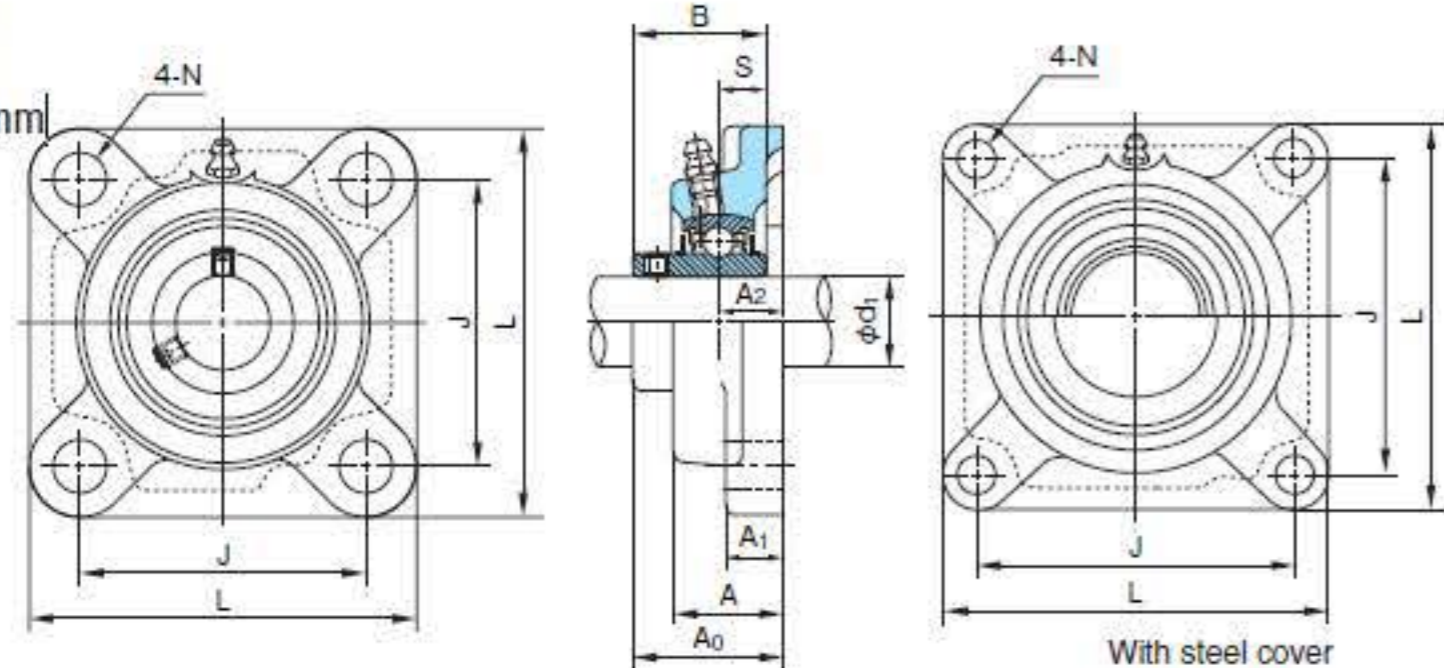


Square Flange Units

UCF type
With set screws
Cylindrical bore
Shaft dia.: 12~60mm



1N=0.102kgf

Shaft dia. d1 (mm)	Unit No.	Boundary dimensions (mm)														Bolt size	Bearings			Housing No.	Unit No. with steel cover Cover with rubber seal (End cover)	Unit No. with cast cover Cover with rubber seal (End cover)	Mass of Unit (kg)		
		L	A	J	N	A1	A2	A0	B	S	A4	A5	A6	A7	No.		Basic load rating (N)		standard				with steel cover	with cast cover	
																	Cr	Cor							
12	UCF201	86	25.5	64	12	12	15	33.3	31	12.7	43	46	8	6	M10	UC201	12800	6600	F204	UCF201C(E)	CUCF201C(CE)	0.64	0.67	1.0	
15	UCF202	86	25.5	64	12	12	15	33.3	31	12.7	43	46	8	6	M10	UC202	12800	6600	F204	UCF202C(E)	CUCF202C(CE)	0.62	0.65	1.0	
17	UCF203	86	25.5	64	12	12	15	33.3	31	12.7	43	46	8	6	M10	UC203	12800	6600	F204	UCF203C(E)	CUCF203C(CE)	0.61	0.64	1.0	
20	UCF204	86	25.5	64	12	12	15	33.3	31	12.7	43	46	8	6	M10	UC204	12800	6600	F204	UCF204C(E)	CUCF204C(CE)	0.59	0.62	1.0	
25	UCF205	95	27	70	12	14	16	35.7	34	14.3	48	51	11	9	M10	UC205	14000	7900	F205	UCF205C(E)	CUCF205C(CE)	0.82	0.86	1.2	
	UCFX05	108	30	83	12	13	18	40.2	38.1	15.9	51	—	9	—	M10	UCX05	19600	11300	FX05	UCFX05C(E)	—	1.1	1.2	—	
	UCF305	110	29	80	16	13	16	39	38	15	—	55	—	10	M14	UC305	21300	10900	F305	—	CUCF305C(CE)	1.2	—	1.6	
30	UCF206	108	31	83	12	14	18	40.2	38.1	15.9	51	55	9	8	M10	UC206	19600	11300	F206	UCF206C(E)	CUCF206C(CE)	1.1	1.2	1.6	
	UCFX06	117	34	92	16	14	19	44.4	42.9	17.5	54	—	8	—	M14	UCX06	25900	15400	FX06	UCFX06C(E)	—	1.3	1.3	—	
	UCF306	125	32	95	16	15	18	44	43	17	—	60	—	10	M14	UC306	26800	15000	F306	—	CUCF306C(CE)	1.7	—	2.1	
35	UCF207	117	34	92	14	16	19	44.4	42.9	17.5	54	59	8	8	M12	UC207	25900	15400	F207	UCF207C(E)	CUCF207C(CE)	1.5	1.6	2.1	
	UCFX07	130	38	102	16	14	21	51.2	49.2	19	63	—	10	—	M14	UCX07	29300	17900	FX07	UCFX07C(E)	—	1.8	1.8	—	
	UCF307	135	36	100	19	16	20	49	48	19	—	65	—	10	M16	UC307	33500	19200	F307	—	CUCF307C(CE)	2.1	—	2.6	
40	UCF208	130	36	102	16	16	21	51.2	49.2	19	62	66	10	8	M14	UC208	29300	17900	F208	UCF208C(E)	CUCF208C(CE)	2.0	2.1	2.7	
	UCFX08	137	40	105	19	14	22	52.2	49.2	19	63	—	10	—	M16	UCX08	33000	20500	FX08	UCFX08C(E)	—	1.8	1.8	—	
	UCF308	150	40	112	19	17	23	56	52	19	—	73	—	11	M16	UC308	40500	23900	F308	—	CUCF308C(CE)	2.9	—	3.4	
45	UCF209	137	38	105	16	18	22	52.2	49.2	19	63	67	10	8	M14	UC209	33000	20500	F209	UCF209C(E)	CUCF209C(CE)	2.4	2.5	3.1	
	UCFX09	143	40	111	19	14	23	55.6	51.6	19	67	—	9	—	M16	UCX09	35500	23200	FX09	UCFX09C(E)	—	2.4	2.5	—	
	UCF309	160	44	125	19	18	25	60	57	22	—	78	—	12	M16	UC309	51500	29500	F309	—	CUCF309C(CE)	3.6	—	4.3	
50	UCF210	143	40	111	16	18	22	54.6	51.6	19	66	71	9	10	M14	UC210	35500	23200	F210	UCF210C(E)	CUCF210C(CE)	2.5	2.6	3.6	
	UCFX10	162	44	130	19	20	26	59.4	55.6	22.2	70	—	9	—	M16	UCX10	43000	29400	FX10	UCFX10C(E)	—	3.6	3.7	—	
	UCF310	175	48	132	23	19	28	67	61	22	—	85	—	12	M20	UC310	61500	38200	F310	—	CUCF310C(CE)	4.7	—	5.5	
55	UCF211	162	43	130	19	20	25	58.4	55.6	22.2	69	75	9	10	M16	UC211	43000	29400	F211	UCF211C(E)	CUCF211C(CE)	3.4	3.6	4.6	
	UCFX11	175	49	143	19	20	29	68.7	65.1	25.4	79	—	9	—	M16	UCX11	52500	36100	FX11	UCFX11C(E)	—	4.5	4.6	—	
	UCF311	185	52	140	23	20	30	71	66	25	—	90	—	13	M20	UC311	71500	44800	F311	—	CUCF311C(CE)	5.7	—	6.7	
60	UCF212	175	48	143	19	20	29	68.7	65.1	25.4	80	86	10	11	M16	UC212	52500	36100	F212	UCF212C(E)	CUCF212C(CE)	4.6	4.8	5.9	
	UCFX12	187	59	149	19	21	34	73.7	65.1	25.4	86	—	11	—	M16	UCX12	57500	40000	FX12	UCFX12C(E)	—	5.3	5.5	—	
	UCF312	195	56	150	23	22	33	78	71	26	—	98	—	14	M20	UC312	81500	52000	F312	—	CUCF312C(CE)	6.8	—	7.7	

Remarks: 1. Grease nipple : 1/4-28UNF

Remarks: 2. Examples of unit numbers with cover:
 With steel cover { Cover with rubber seal :UCF210C
 End cover :UCF210E
 With cast cover { Cover with rubber seal :CUCF210C
 End cover :CUCF210CE