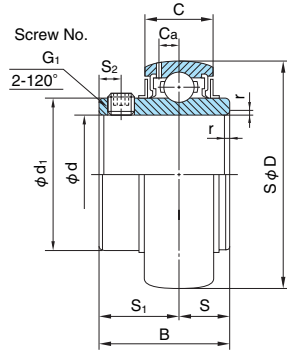


**Ball Bearings for Units**

**UC type**  
**With set screws**  
**Cylindrical bore**  
 Shaft dia.: 12~140mm



1N=0.102kgf

Shaft dia. (mm)	Ball Bearing No.	Boundary dimensions (mm)											Basic load rating (N)		Mass (kg)
		d	D	B	C	r	S	S <sub>1</sub>	S <sub>2</sub>	G <sub>1</sub>	Ca	d <sub>1</sub>	Cr	Cor	
12	UC201	12	47	31	17	1	12.7	18.3	4.5	M 6×0.75	4.5	29	12800	6600	0.21
15	UC202	15	47	31	17	1	12.7	18.3	4.5	M 6×0.75	4.5	29	12800	6600	0.19
17	UC203	17	47	31	17	1	12.7	18.3	4.5	M 6×0.75	4.5	29	12800	6600	0.18
20	UC204	20	47	31	17	1.5	12.7	18.3	4.5	M 6×0.75	4.5	29	12800	6600	0.16
25	UC205	25	52	34	17	1.5	14.3	19.7	5	M 6×0.75	4.5	34	14000	7900	0.19
	UCX05	25	62	38.1	19	1.5	15.9	22.2	5	M 6×0.75	5.1	40.5	19600	11300	0.37
	UC305	25	62	38	21	2	15	23	6	M 6×0.75	6.1	36.9	21300	10900	0.44
30	UC206	30	62	38.1	19	1.5	15.9	22.2	5	M 6×0.75	5.1	40.5	19600	11300	0.31
	UCX06	30	72	42.9	20	1.5	17.5	25.4	6	M 8×1	5.8	48	25900	15400	0.46
	UC306	30	72	43	23	2	17	26	6	M 6×0.75	6.7	45	26800	15000	0.56
35	UC207	35	72	42.9	20	2	17.5	25.4	6	M 8×1	5.8	48	25900	15400	0.48
	UCX07	35	80	49.2	21	2	19	30.2	8	M 8×1	6.2	53	29300	17900	0.74
	UC307	35	80	48	25	2.5	19	29	8	M 8×1	7.4	50.5	33500	19200	0.71
40	UC208	40	80	49.2	21	2	19	30.2	8	M 8×1	6.2	53	29300	17900	0.62
	UCX08	40	85	49.2	22	2	19	30.2	8	M 8×1	6.5	57.3	33000	20500	0.80
	UC308	40	90	52	27	2.5	19	33	10	M10×1.25	8.2	56	40500	23900	1.00
45	UC209	45	85	49.2	22	2	19	30.2	8	M 8×1	6.5	57.3	33000	20500	0.67
	UCX09	45	90	51.6	23	2	19	32.6	9	M10×1.25	6.5	63	35500	23200	0.92
	UC309	45	100	57	30	2.5	22	35	10	M10×1.25	9	63	51500	29500	1.28
50	UC210	50	90	51.6	23	2	19	32.6	9	M10×1.25	6.5	63	35500	23200	0.78
	UCX10	50	100	55.6	24	2	22.2	33.4	9	M10×1.25	7.3	70	43000	29400	1.21
	UC310	50	110	61	32	3	22	39	12	M12×1.5	10	70.5	61500	38200	1.65
55	UC211	55	100	55.6	24	2.5	22.2	33.4	9	M10×1.25	7.3	70	43000	29400	1.03
	UCX11	55	110	65.1	26	2.5	25.4	39.7	10	M10×1.25	7.7	77	52500	36100	1.72
	UC311	55	120	66	34	3	25	41	12	M12×1.5	10.7	76.5	71500	44800	2.07
60	UC212	60	110	65.1	26	2.5	25.4	39.7	10	M10×1.25	7.7	77	52500	36100	1.45
	UCX12	60	120	65.1	27	2.5	25.4	39.7	10	M10×1.25	8.3	82.1	57500	40000	1.97
	UC312	60	130	71	36	3.5	26	45	12	M12×1.5	11.5	82.5	81500	52000	2.59
65	UC213	65	120	65.1	27	2.5	25.4	39.7	10	M10×1.25	8.3	82.1	57500	40000	1.71
	UCX13	65	125	74.6	29	2.5	30.2	44.4	12	M12×1.5	8.7	87	62000	44000	2.33
	UC313	65	140	75	38	3.5	30	45	12	M12×1.5	12.2	88.5	92500	59700	3.15
70	UC214	70	125	74.6	29	2.5	30.2	44.4	12	M12×1.5	8.7	87	62000	44000	2.06
	UCX14	70	130	77.8	30	2.5	33.3	44.5	12	M12×1.5	9.2	91.5	66000	48200	2.57
	UC314	70	150	78	40	3.5	33	45	12	M12×1.5	13	95.2	104000	68000	3.83

1N=0.102kgf

Shaft dia. (mm)	Ball Bearing No.	Boundary dimensions (mm)											Basic load rating (N)		Mass (kg)
		d	D	B	C	r	S	S <sub>1</sub>	S <sub>2</sub>	G <sub>1</sub>	Ca	d <sub>1</sub>	Cr	Cor	
75	UC215	75	130	77.8	30	2.5	33.3	44.5	14	M12×1.5	9.2	91.5	66000	48200	2.22
	UCX15	75	140	82.6	32	2.5	33.3	49.3	12	M12×1.5	9.6	98.5	72500	53000	3.22
	UC315	75	160	82	42	3.5	32	50	14	M14×1.5	13.8	101.5	114000	76900	4.59
80	UC216	80	140	82.6	32	3	33.3	49.3	14	M12×1.5	9.6	98.5	72500	53000	2.82
	UCX16	80	150	85.7	34	3	34.1	51.6	12	M12×1.5	10.5	105	83500	61800	3.81
	UC316	80	170	86	44	3.5	34	52	14	M14×1.5	14.5	108	123000	86400	5.40
85	UC217	85	150	85.7	34	3	34.1	51.6	14	M12×1.5	10.5	105	83500	61800	3.38
	UCX17	85	160	96	36	3	39.7	56.3	12	M12×1.5	11.1	111.5	95500	71400	4.83
	UC317	85	180	96	46	4	40	56	16	M16×1.5	15	114.5	132000	96500	6.58
90	UC218	90	160	96	36	3	39.7	56.3	15	M12×1.5	11.1	111.5	95500	71400	4.34
	UCX18	90	170	104	38	3	42.9	61.1	14	M14×1.5	11.9	118	109000	81600	5.49
	UC318	90	190	96	48	4	40	56	16	M16×1.5	15.9	121	143000	107200	7.34
95	UC319	95	200	103	50	4	41	62	16	M16×1.5	16.7	127.5	153000	118400	8.70
100	UC219	100	170	104	38	3	42.9	61.1	14	M14×1.5	11.9	118	109000	81600	5.49
	UCX20	100	190	96	48	4	40	56	16	M16×1.5	15.9	121	143000	107200	7.34
	UC320	100	215	108	54	4	42	66	18	M18×1.5	18	135.5	173000	140400	10.8
105	UC321	105	225	112	56	4	44	68	18	M18×1.5	19	142	183000	153100	12.2
110	UC322	110	240	117	60	4	46	71	18	M18×1.5	21	152	205000	178800	14.3
120	UC324	120	260	126	64	4	51	75	18	M18×1.5	22	165	207000	184800	18.5
130	UC326	130	280	135	68	5	54	81	20	M20×1.5	23	178	229000	214300	23.0
140	UC328	140	300	145	73	5	59	86	20	M20×1.5	25	191.5	255000	246000	28.5

Remark: Chamfer dimensions "r" shown in the table are nominal dimension.