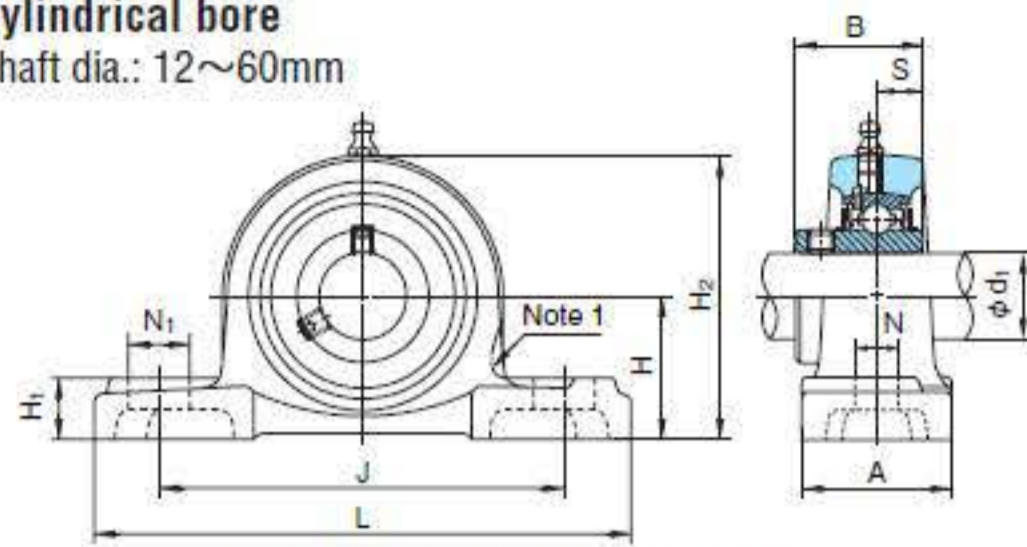
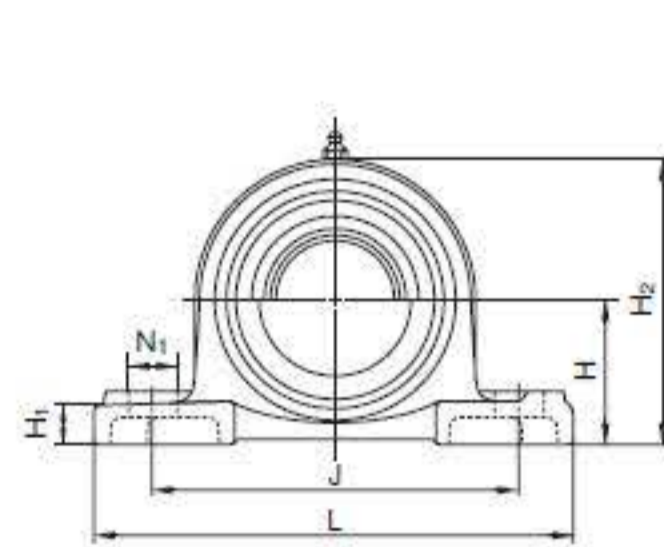


Pillow Block Units

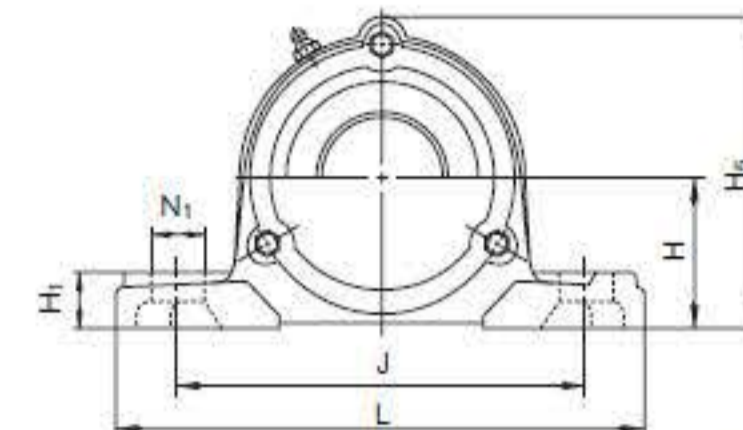
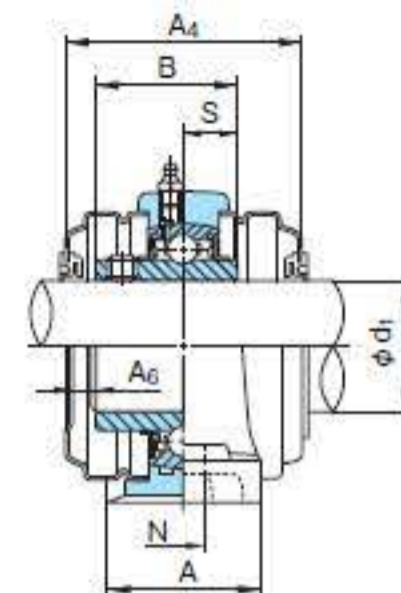
UCP type
With set screws
Cylindrical bore
Shaft dia.: 12~60mm



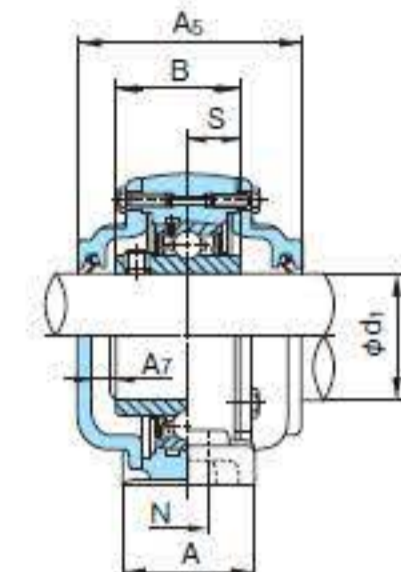
Note: The line shows figure of UCPX00 series



With steel covers



With cast covers



1N=0.102kgf

| Shaft dia. d ₁ (mm) | Unit No. | Boundary dimensions (mm) | | | | | | | | | | | | | | | | Bolt size | Bearings | | | | Housing No. | Unit No. with steel covers | | Unit No. with cast covers | | Mass of Unit (kg) | | |
|--------------------------------|----------|--------------------------|-----|----|-----|----|----------------|----------------|----------------|----------------|------|------|----------------|----------------|----------------|----------------|-----|-----------|-----------------------|-------|---|---|--------------|----------------------------|------------------|---------------------------|--|-------------------|--|--|
| | | H | L | A | J | N | N ₁ | H ₁ | H ₂ | H _s | B | S | A ₄ | A ₅ | A ₆ | A ₇ | No. | | Basic load rating (N) | | Covers with rubber seal (End cover on one side) | Covers with rubber seal (End cover on one side) | | standard | with steel cover | with cast covers | | | | |
| | | | | | | | | | | | | | | | | | | | Cr | Cor | | | | | | | | | | |
| 12 | UCP201 | 30.2 | 127 | 38 | 95 | 13 | 19 | 15 | 62 | 66 | 31 | 12.7 | 56 | 62 | 8 | 6 | M10 | UC201 | 12800 | 6600 | P203 | UCP201C(E) | CUCP201C(CE) | 0.65 | 0.71 | 1.1 | | | | |
| 15 | UCP202 | 30.2 | 127 | 38 | 95 | 13 | 19 | 15 | 62 | 66 | 31 | 12.7 | 56 | 62 | 8 | 6 | M10 | UC202 | 12800 | 6600 | P203 | UCP202C(E) | CUCP202C(CE) | 0.63 | 0.69 | 1.1 | | | | |
| 17 | UCP203 | 30.2 | 127 | 38 | 95 | 13 | 19 | 15 | 62 | 66 | 31 | 12.7 | 56 | 62 | 8 | 6 | M10 | UC203 | 12800 | 6600 | P203 | UCP203C(E) | CUCP203C(CE) | 0.62 | 0.68 | 1.1 | | | | |
| 20 | UCP204 | 33.3 | 127 | 38 | 95 | 13 | 19 | 15 | 65 | 69 | 31 | 12.7 | 56 | 62 | 8 | 6 | M10 | UC204 | 12800 | 6600 | P204 | UCP204C(E) | CUCP204C(CE) | 0.65 | 0.71 | 1.1 | | | | |
| 25 | UCP205 | 36.5 | 140 | 38 | 105 | 13 | 16 | 16 | 70 | 76 | 34 | 14.3 | 63 | 70 | 11 | 9 | M10 | UC205 | 14000 | 7900 | P205 | UCP205C(E) | CUCP205C(CE) | 0.79 | 0.86 | 1.4 | | | | |
| | UCPX05 | 44.4 | 159 | 51 | 119 | 17 | 25 | 18 | 85 | — | 38.1 | 15.9 | 65 | — | 9 | — | M14 | UCX05 | 19600 | 11300 | PX05 | UCPX05C(E) | — | 1.5 | 1.5 | — | | | | |
| | UCP305 | 45 | 175 | 45 | 132 | 17 | 20 | 16 | 84 | 89 | 38 | 15 | — | 78 | — | 10 | M14 | UC305 | 21300 | 10900 | P305 | — | CUCP305C(CE) | 1.6 | — | 2.1 | | | | |
| 30 | UCP206 | 42.9 | 165 | 48 | 121 | 17 | 21 | 18 | 83 | 87 | 38.1 | 15.9 | 65 | 74 | 9 | 8 | M14 | UC206 | 19600 | 11300 | P206 | UCP206C(E) | CUCP206C(CE) | 1.3 | 1.4 | 2.0 | | | | |
| | UCPX06 | 47.6 | 175 | 57 | 127 | 17 | 25 | 20 | 94 | — | 42.9 | 17.5 | 70 | — | 8 | — | M14 | UCX06 | 25900 | 15400 | PX06 | UCPX06C(E) | — | 1.9 | 1.9 | — | | | | |
| | UCP306 | 50 | 180 | 50 | 140 | 17 | 20 | 19 | 94 | 99 | 43 | 17 | — | 84 | — | 10 | M14 | UC306 | 26800 | 15000 | P306 | — | CUCP306C(CE) | 1.9 | — | 2.6 | | | | |
| 35 | UCP207 | 47.6 | 167 | 48 | 127 | 17 | 21 | 19 | 94 | 97 | 42.9 | 17.5 | 70 | 80 | 8 | 8 | M14 | UC207 | 25900 | 15400 | P207 | UCP207C(E) | CUCP207C(CE) | 1.6 | 1.7 | 2.5 | | | | |
| | UCPX07 | 54 | 203 | 57 | 144 | 17 | 30 | 22 | 105 | — | 49.2 | 19 | 83 | — | 10 | — | M14 | UCX07 | 29300 | 17900 | PX07 | UCPX07C(E) | — | 2.7 | 2.7 | — | | | | |
| | UCP307 | 56 | 210 | 56 | 160 | 17 | 25 | 21 | 105 | 110 | 48 | 19 | — | 90 | — | 10 | M14 | UC307 | 33500 | 19200 | P307 | — | CUCP307C(CE) | 2.7 | — | 3.4 | | | | |
| 40 | UCP208 | 49.2 | 184 | 54 | 137 | 17 | 25 | 19 | 100 | 104 | 49.2 | 19 | 82 | 90 | 10 | 8 | M14 | UC208 | 29300 | 17900 | P208 | UCP208C(E) | CUCP208C(CE) | 2.0 | 2.2 | 3.0 | | | | |
| | UCPX08 | 58.7 | 222 | 67 | 156 | 20 | 32 | 26 | 113 | — | 49.2 | 19 | 82 | — | 10 | — | M16 | UCX08 | 33000 | 20500 | PX08 | UCPX08C(E) | — | 3.5 | 3.5 | — | | | | |
| | UCP308 | 60 | 220 | 60 | 170 | 17 | 27 | 23 | 116 | 122 | 52 | 19 | — | 100 | — | 11 | M14 | UC308 | 40500 | 23900 | P308 | — | CUCP308C(CE) | 3.3 | — | 4.4 | | | | |
| 45 | UCP209 | 54 | 190 | 54 | 146 | 17 | 22 | 20 | 108 | 114 | 49.2 | 19 | 82 | 90 | 10 | 8 | M14 | UC209 | 33000 | 20500 | P209 | UCP209C(E) | CUCP209C(CE) | 2.3 | 2.5 | 3.4 | | | | |
| | UCPX09 | 58.7 | 222 | 67 | 156 | 20 | 33 | 26 | 116 | — | 51.6 | 19 | 87 | — | 9 | — | M16 | UCX09 | 35500 | 23200 | PX09 | UCPX09C(E) | — | 3.5 | 3.6 | — | | | | |
| | UCP309 | 67 | 245 | 67 | 190 | 20 | 30 | 25 | 128 | 136 | 57 | 22 | — | 106 | — | 12 | M16 | UC309 | 51500 | 29500 | P309 | — | CUCP309C(CE) | 4.5 | — | 5.8 | | | | |
| 50 | UCP210 | 57.2 | 206 | 60 | 159 | 20 | 25 | 22 | 114 | 120 | 51.6 | 19 | 87 | 98 | 9 | 10 | M16 | UC210 | 35500 | 23200 | P210 | UCP210C(E) | CUCP210C(CE) | 2.7 | 3.0 | 4.1 | | | | |
| | UCPX10 | 63.5 | 241 | 73 | 171 | 20 | 36 | 27 | 126 | — | 55.6 | 22.2 | 88 | — | 9 | — | M16 | UCX10 | 43000 | 29400 | PX10 | UCPX10C(E) | — | 4.2 | 4.5 | — | | | | |
| | UCP310 | 75 | 275 | 75 | 212 | 20 | 35 | 28 | 143 | 149 | 61 | 22 | — | 114 | — | 12 | M16 | UC310 | 61500 | 38200 | P310 | — | CUCP310C(CE) | 6.2 | — | 7.6 | | | | |
| 55 | UCP211 | 63.5 | 219 | 60 | 171 | 20 | 25 | 22 | 126 | 133 | 55.6 | 22.2 | 88 | 100 | 9 | 10 | M16 | UC211 | 43000 | 29400 | P211 | UCP211C(E) | CUCP211C(CE) | 3.3 | 3.7 | 5.0 | | | | |
| | UCPX11 | 69.8 | 260 | 79 | 184 | 25 | 36 | 30 | 139 | — | 65.1 | 25.4 | 100 | — | 9 | — | M20 | UCX11 | 52500 | 36100 | PX11 | UCPX11C(E) | — | 5.9 | 6.2 | — | | | | |
| | UCP311 | 80 | 310 | 80 | 236 | 20 | 38 | 31 | 154 | 159 | 66 | 25 | — | 120 | — | 13 | M16 | UC311 | 71500 | 44800 | P311 | — | CUCP311C(CE) | 7.7 | — | 9.6 | | | | |
| 60 | UCP212 | 69.8 | 241 | 70 | 184 | 20 | 25 | 25 | 138 | 145 | 65.1 | 25.4 | 102 | 114 | 10 | 11 | M16 | UC212 | 52500 | 36100 | P212 | UCP212C(E) | CUCP212C(CE) | 4.7 | 5.1 | 6.7 | | | | |
| | UCPX12 | 76.2 | 286 | 83 | 203 | 25 | 41 | 32 | 151 | — | 65.1 | 25.4 | 104 | — | 11 | — | M20 | UCX12 | 57500 | 40000 | PX12 | UCPX12C(E) | — | 7.2 | 7.4 | — | | | | |
| | UCP312 | 85 | 330 | 85 | 250 | 25 | 38 | 33 | 165 | 169 | 71 | 26 | — | 130 | — | 14 | M20 | UC312 | 81500 | 52000 | P312 | — | CUCP312C(CE) | 9.3 | — | 11.0 | | | | |

Remarks: 1. Grease nipple: 1/4-28UNF

Remarks: 2. Examples of unit numbers with covers:

- With steel cover { Covers with rubber seal on both sides :UCP210C
- { An end cover and a cover with rubber seal :UCP210E
- With cast covers { Covers with rubber seal on both sides :CUCP210C
- { An end cover and a cover with rubber seal :CUCP210CE