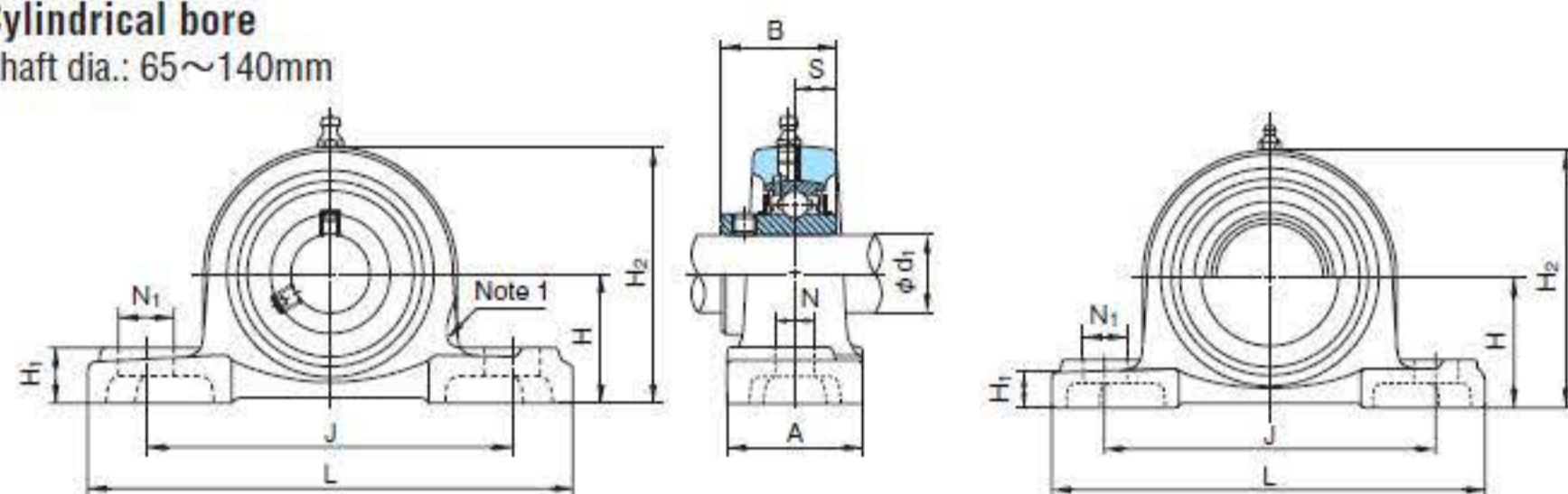


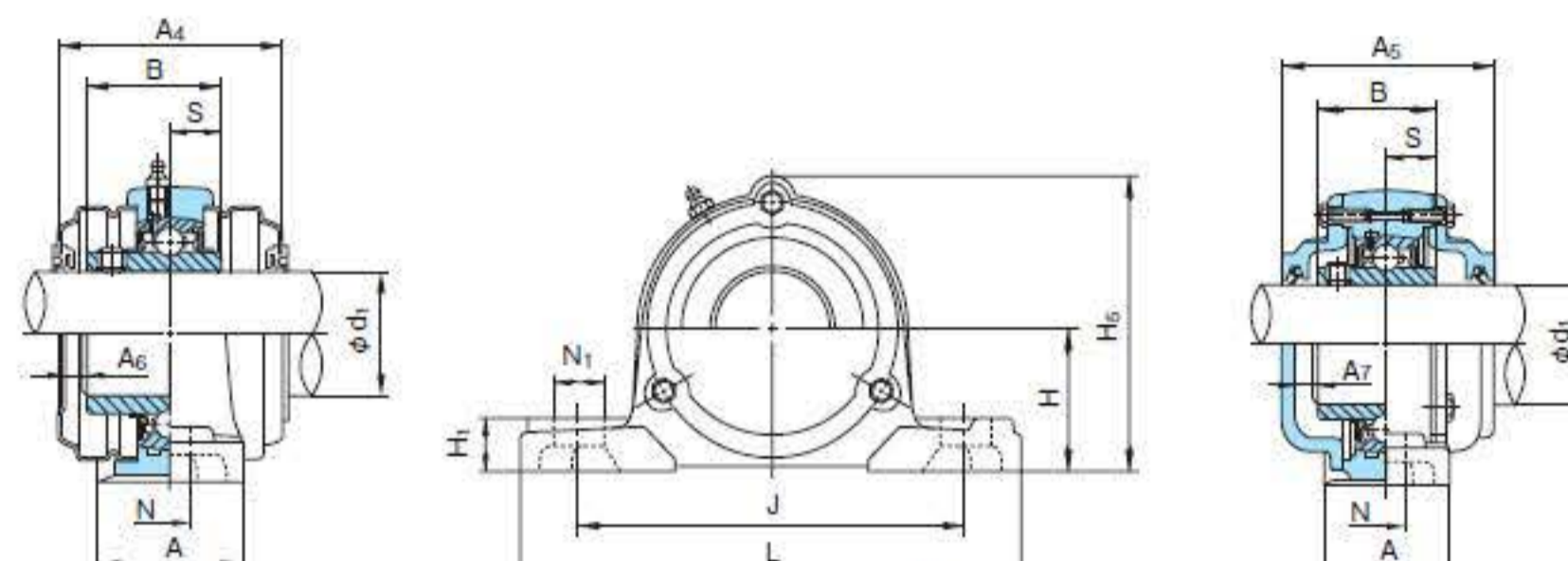
Pillow Block Units

UCP type
With set screws
Cylindrical bore
Shaft dia.: 65~140mm



Note: The line shows figure of UCPX00 series

With steel covers



With cast covers

1N=0.102kgf

Shaft dia. d ₁ (mm)	Unit No.	Boundary dimensions (mm)															Bolt size	Bearings			Housing No.	Unit No. with steel covers		Unit No. with cast covers		Mass of Unit (kg)		
		H	L	A	J	N	N ₁	H ₁	H ₂	H ₅	B	S	A ₄	A ₅	A ₆	A ₇		No.	Basic load rating (N)			Covers with rubber seal (End cover on one side)	Covers with rubber seal (End cover on one side)	standard	With steel cover	With cast covers		
																			Cr	Cor								
65	UCP213	76.2	265	70	203	25	29	27	150	156	65.1	25.4	102	118	10	13	M20	UC213	57500	40000	P213	UCP213C(E)	CUCP213C(CE)	5.6	6.1	7.8		
	UCPX13	76.2	286	83	203	25	41	32	154	—	74.6	30.2	—	—	—	—	M20	UCX13	62000	44000	PX13	—	—	7.4	—	—		
	UCP313	90	340	90	260	25	38	36	174	188	75	30	—	140	—	17	M20	UC313	92500	59700	P313	—	CUCP313C(CE)	9.8	—	14.3		
70	UCP214	79.4	266	72	210	25	31	27	156	162	74.6	30.2	—	134	—	16	M20	UC214	62000	44000	P214	—	CUCP214C(CE)	7.3	—	9.3		
	UCPX14	88.9	330	89	229	27	51	35	172	—	77.8	33.3	—	—	—	—	M22	UCX14	66000	48200	PX14	—	—	11.1	—	—		
	UCP314	95	360	90	280	27	40	40	186	198	78	33	—	140	—	17	M22	UC314	104000	68000	P314	—	CUCP314C(CE)	11.4	—	16.7		
75	UCP215	82.6	275	74	217	25	31	28	163	167	77.8	33.3	—	136	—	17	M20	UC215	66000	48200	P215	—	CUCP215C(CE)	7.9	—	9.6		
	UCPX15	88.9	330	89	229	27	51	35	177	—	82.6	33.3	—	—	—	—	M22	UCX15	72500	53000	PX15	—	—	11.4	—	—		
	UCP315	100	380	100	290	27	40	40	197	208	82	32	—	150	—	17	M22	UC315	114000	76900	P315	—	CUCP315C(CE)	13.6	—	19.6		
80	UCP216	88.9	292	78	232	25	31	30	175	188	82.6	33.3	—	146	—	15	M20	UC216	72500	53000	P216	—	CUCP216C(CE)	10.0	—	12.2		
	UCPX16	101.6	381	102	283	27	59	42	197	—	85.7	34.1	—	—	—	—	M22	UCX16	83500	61800	PX16	—	—	17.4	—	—		
	UCP316	106	400	110	300	27	40	45	209	219	86	34	—	154	—	17	M22	UC316	123000	86400	P316	—	CUCP316C(CE)	16.4	—	23.5		
85	UCP217	95.2	310	83	247	25	31	32	187	199	85.7	34.1	—	150	—	15	M20	UC217	83500	61800	P217	—	CUCP217C(CE)	12.2	—	14.2		
	UCPX17	101.6	381	102	283	27	59	42	202	—	96	39.7	—	—	—	—	M22	UCX17	95500	71400	PX17	—	—	17.1	—	—		
	UCP317	112	420	110	320	33	45	45	221	234	96	40	—	164	—	18	M27	UC317	132000	96500	P317	—	CUCP317C(CE)	18.6	—	27.0		
90	UCP218	101.6	327	88	262	27	33	34	200	211	96	39.7	—	164	—	17	M22	UC218	95500	71400	P218	—	CUCP218C(CE)	14.7	—	18.2		
	UCPX18	101.6	381	111	283	27	60	45	206	—	104	42.9	—	—	—	—	M22	UCX18	109000	81600	PX18	—	—	17.0	—	—		
	UCP318	118	430	110	330	33	45	50	233	245	96	40	—	168	—	20	M27	UC318	143000	107200	P318	—	CUCP318C(CE)	20.9	—	30.4		
95	UCP319	125	470	120	360	36	50	50	250	257	103	41	—	180	—	20	M30	UC319	153000	118400	P319	—	CUCP319C(CE)	26.5	—	36.8		
100	UCPX20	127	432	121	337	33	64	52	250	—	117.5	49.2	—	—	—	—	M27	UCX20	134000	104700	PX20	—	—	33.0	—	—		
	UCP320	140	490	120	380	36	50	55	275	282	108	42	—	190	—	21	M30	UC320	173000	140400	P320	—	CUCP320C(CE)	34.3	—	44.9		
105	UCP321	140	490	120	380	36	50	55	278	287	112	44	—	194	—	21	M30	UC321	183000	153100	P321	—	CUCP321C(CE)	36.6	—	45.2		
110	UCP322	150	520	140	400	40	55	60	295	305	117	46	—	210	—	26	M33	UC322	205000	178800	P322	—	CUCP322C(CE)	42.5	—	54.7		
120	UCP324	160	570	140	450	40	55	70	321	328	126	51	—	220	—	25	M33	UC324	207000	184800	P324	—	CUCP324C(CE)	53.5	—	73.8		
130	UCP326	180	600	140	480	40	55	80	354	358	135	54	—	230	—	24	M33	UC326	229000	214300	P326	—	CUCP326C(CE)	72.1	—	92.2		
140	UCP328	200	620	140	500	40	55	80	388	388	145	59	—	240	—	24	M33	UC328	255000	246000	P328	—	CUCP328C(CE)	89.1	—	110		

Remarks: 1. Grease nipple: 1/4-28UNF for bore number 13
PF1/8 for bore number 14 and over

Remarks: 2. Examples of unit numbers with covers:
 With steel cover { Covers with rubber seal on both sides :UCP213C
 An end cover and a cover with rubber seal :UCP213E
 With cast covers { Covers with rubber seal on both sides :CUCP213C
 An end cover and a cover with rubber seal :CUCP213CE