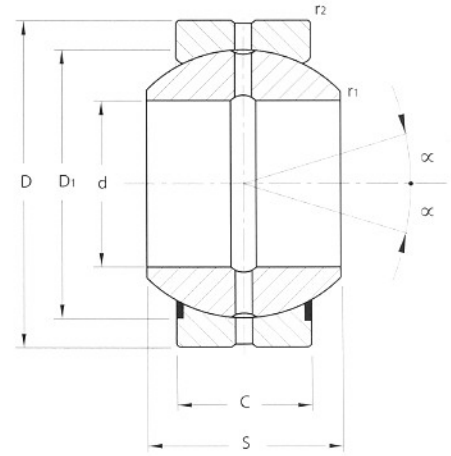


SRL...

SRL... - 2RS

SPHERICAL PLAIN BEARINGS

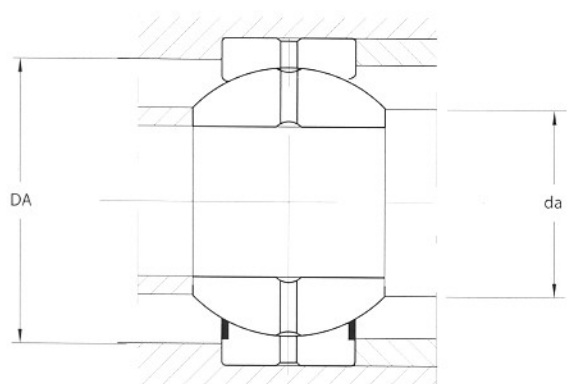
-REQUIRING MAINTENANCE
-COUPLING:STEEL/STEEL



CODE BEARINGS WITHOUT PROTECTION RINGS	CODE BEARINGS WITH PROTECTION RINGS	d	D	S	C	TOLERANCE				r1	R2
						d	D	S	C		
mm.											
SRL 6 (1) (3)		6	16	9	5	0 + -0.008	0 + -0.008	0 + -0.12	0 + -0.24	0.3	0.3
SRL 8 (1)		8	19	11	6	0 + -0.008	0 + -0.009	0 + -0.12	0 + -0.24	0.3	0.3
SRL 10 (1)		10	22	12	7	0 + -0.008	0 + -0.009	0 + -0.12	0 + -0.24	0.3	0.3
SRL 12 (2)		12	26	15	9	0 + -0.008	0 + -0.009	0 + -0.12	0 + -0.24	0.3	0.3
SRL 15	SRL 15 - 2RS	15	30	16	10	0 + -0.008	0 + -0.009	0 + -0.12	0 + -0.24	0.3	0.3
SRL 17	SRL 17 - 2RS	17	35	20	12	0 + -0.008	0 + -0.011	0 + -0.12	0 + -0.24	0.3	0.3
SRL 20	SRL 20 - 2RS	20	42	25	16	0 + -0.010	0 + -0.011	0 + -0.12	0 + -0.24	0.6	0.6
SRL 25	SRL 25 - 2RS	25	47	28	18	0 + -0.010	0 + -0.011	0 + -0.12	0 + -0.24	0.6	0.6
SRL 30	SRL 30 - 2RS	30	55	32	20	0 + -0.010	0 + -0.013	0 + -0.12	0 + -0.30	0.6	1.0
SRL 35	SRL 35 - 2RS	35	62	35	22	0 + -0.012	0 + -0.013	0 + -0.12	0 + -0.30	0.6	1.0
SRL 40	SRL 40 - 2RS	40	68	40	25	0 + -0.012	0 + -0.013	0 + -0.12	0 + -0.30	0.6	1.0
SRL 45	SRL 45 - 2RS	45	75	43	28	0 + -0.012	0 + -0.013	0 + -0.12	0 + -0.30	0.6	1.0
SRL 50	SRL 50 - 2RS	50	90	56	36	0 + -0.012	0 + -0.015	0 + -0.15	0 + -0.40	0.6	1.0
SRL 60	SRL 60 - 2RS	60	105	63	40	0 + -0.015	0 + -0.015	0 + -0.15	0 + -0.40	1.0	1.0
SRL 70	SRL 70 - 2RS	70	120	70	45	0 + -0.015	0 + -0.015	0 + -0.15	0 + -0.40	1.0	1.0
SRL 80	SRL 80 - 2RS	80	130	75	50	0 + -0.015	0 + -0.018	0 + -0.20	0 + -0.50	1.0	1.0
SRL 90	SRL 90 - 2RS	90	150	80	55	0 + -0.020	0 + -0.018	0 + -0.20	0 + -0.50	1.0	1.0
SRL 100	SRL 100 - 2RS	100	160	85	55	0 + -0.020	0 + -0.025	0 + -0.20	0 + -0.50	1.0	1.0
SRL 110	SRL 110 - 2RS	110	180	100	70	0 + -0.020	0 + -0.025	0 + -0.20	0 + -0.50	1.0	1.0
SRL 120	SRL 120 - 2RS	120	210	115	70	0 + -0.020	0 + -0.030	0 + -0.25	0 + -0.60	1.0	1.0
SRL 140	SRL 140 - 2RS	140	230	130	80	0 + -0.025	0 + -0.030	0 + -0.25	0 + -0.60	1.0	1.0
SRL 160 (3)	SRL 160 - 2RS	160	260	135	80	0 + -0.025	0 + -0.035	0 + -0.25	0 + -0.70	1.0	1.1
SRL 180 (3)	SRL 180 - 2RS	180	290	155	100	0 + -0.025	0 + -0.035	0 + -0.30	0 + -0.70	1.1	1.1
	SRL 200 - 2RS (3)	200	320	165	100	0 + -0.030	0 + -0.040	0 + -0.30	0 + -0.80	1.1	1.1
	SRL 220 - 2RS (3)	220	340	175	100	0 + -0.030	0 + -0.040	0 + -0.30	0 + -0.80	1.1	1.1
	SRL 240 - 2RS (3)	240	370	190	110	0 + -0.030	0 + -0.040	0 + -0.35	0 + -0.80	1.1	1.1
	SRL 260 - 2RS (3)	260	400	205	120	0 + -0.035	0 + -0.040	0 + -0.35	0 + -0.80	1.1	1.1
	SRL 280 - 2RS (3)	280	430	210	120	0 + -0.035	0 + -0.045	0 + -0.35	0 + -0.90	1.1	1.1

(1) WITHOUT GREASE NIPPLE
(2) MAINTENANCE THROUGH EXTERNAL RING
(3) AVAILABILITY AND PRICE UPON REQUEST

NOTES: TO AVOID THE DAMAGE OR THE LOSS OF THE PROTECTION RINGS(-2RS) DO NOT ALLOW INNER BALL TO ROTATE OUT OF THE EXTERNAL HOUSING.



d	D1	OSCILLATION ANGLE α	LOAD FACTOR		RADIAL CLEARANCE	R1	R2	MOUNTING DIMENSIONS		WEIGHT
			DYNAM. C	STA. CO				da max.	DA min.	
mm.		GRADI	KN			mm.			Kg.	
6	13	21	5.5	7.5	0.032 - 0.068	0.3	0.3	9.3	12.5	0.008
8	16	21	8.15	40.5	0.032 - 0.068	0.3	0.3	11.6	15.5	0.01
10	18	18	10.8	54	0.032 - 0.068	0.3	0.3	13.4	17.5	0.02
12	22	18	17	85	0.040 - 0.082	0.3	0.3	16	21	0.03
15	25	16	21.2	106	0.040 - 0.082	0.3	0.3	19.2	24	0.04
17	29	19	30	146	0.040 - 0.082	0.3	0.3	21	27.5	0.07
20	35.5	17	48	240	0.050 - 0.100	0.6	0.6	25.2	33	0.15
25	40.7	17	62	310	0.050 - 0.100	0.6	0.6	29.5	38	0.19
30	47	17	80	400	0.050 - 0.100	0.6	1.0	34.4	44.5	0.29
35	53	16	100	500	0.060 - 0.120	0.6	1.0	39.7	51	0.39
40	60	17	127	640	0.060 - 0.120	0.6	1.0	44.7	57	0.52
45	66	15	156	780	0.060 - 0.120	0.6	1.0	50	63	0.68
50	80	17	245	1220	0.060 - 0.120	0.6	1.0	57.1	75	1.40
60	92	17	315	1560	0.072 - 0.142	1.0	1.0	67	87	2.00
70	105	16	400	2000	0.072 - 0.142	1.0	1.0	78.2	99	2.90
80	115	14	490	2450	0.072 - 0.142	1.0	1.0	87.1	108	3.50
90	130	15	610	3050	0.085 - 0.165	1.0	1.0	98.3	123	5.40
100	140	14	655	3250	0.085 - 0.165	1.0	1.0	111.2	134	5.90
110	160	12	950	4750	0.085 - 0.165	1.0	1.0	124.8	150	9.70
120	180	16	1080	5400	0.085 - 0.165	1.0	1.0	138.4	173	15.00
140	200	16	1370	6800	0.100 - 0.192	1.0	1.0	151.9	191	18.50
160	225	16	1530	7650	0.100 - 0.192	1.0	1.1	180	219	25.00
180	250	14	2120	10600	0.100 - 0.192	1.1	1.1	196.1	239	35.50
200	275	15	2320	11600	0.100 - 0.192	1.1	1.1	220	267	45.00
220	300	16	2550	12700	0.100 - 0.192	1.1	1.1	243.6	295	51.00
240	325	15	3050	15300	0.110 - 0.214	1.1	1.1	263.6	319	64.00
260	350	15	3550	18000	0.110 - 0.214	1.1	1.1	283.6	342	81.00
280	375	15	3800	19000	0.110 - 0.214	1.1	1.1	310.6	370	94.00